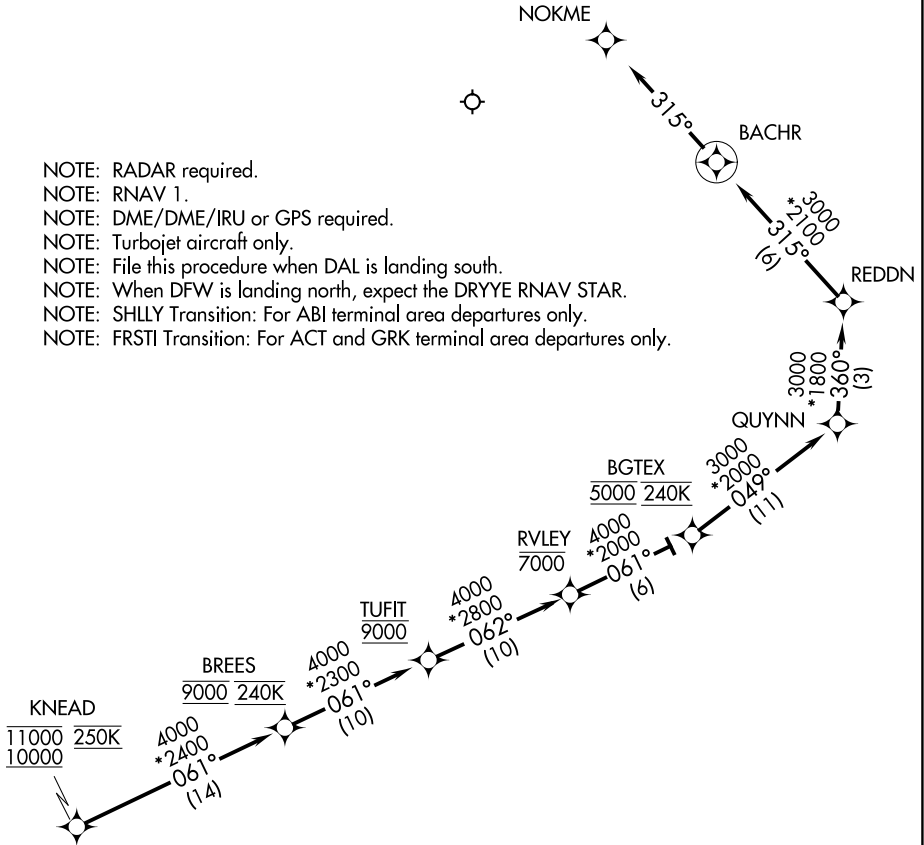


LONE STAR APP CON
135.975 379.9
D-ATIS
120.15

- NOTE: RADAR required.
- NOTE: RNAV 1.
- NOTE: DME/DME/IRU or GPS required.
- NOTE: Turbojet aircraft only.
- NOTE: File this procedure when DAL is landing south.
- NOTE: When DFW is landing north, expect the DRYYE RNAV STAR.
- NOTE: SHLLY Transition: For ABL terminal area departures only.
- NOTE: FRSTI Transition: For ACT and GRK terminal area departures only.



ARRIVAL ROUTE DESCRIPTION

From KNEAD on track 061° to cross BREES at 9000 and at 240K, then on track 061° to cross TUFIT at 9000, then on track 062° to cross RVLEY at or below 7000, then on track 061° to cross BGTEX at 5000 and at 240K, then on track 049° to QUYNN, then on track 360° to REDDN, then on track 315° to BACHR, then on track 315°.
Expect RADAR vectors to final approach course.

SC-2, 14 MAY 2026 to 11 JUN 2026

SC-2, 14 MAY 2026 to 11 JUN 2026