

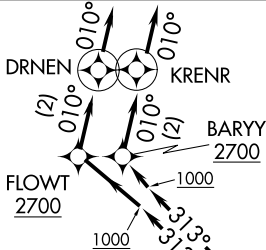
CURLO SIX DEPARTURE (RNAV)

TOP ALTITUDE:
RWYS 13L/R: 8000
RWYS 31L/R: 6000

RNAV 1 - DME/DME/IRU
 or GPS required.

RADAR required.

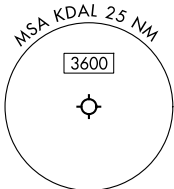
LONE STAR DEP CON
 125.125 353.95
 D-ATIS
 120.15
 CLNC DEL
 127.9
 CPDLC
 GND CON
 121.75 348.6
 LOVE TOWER
 123.7 239.3



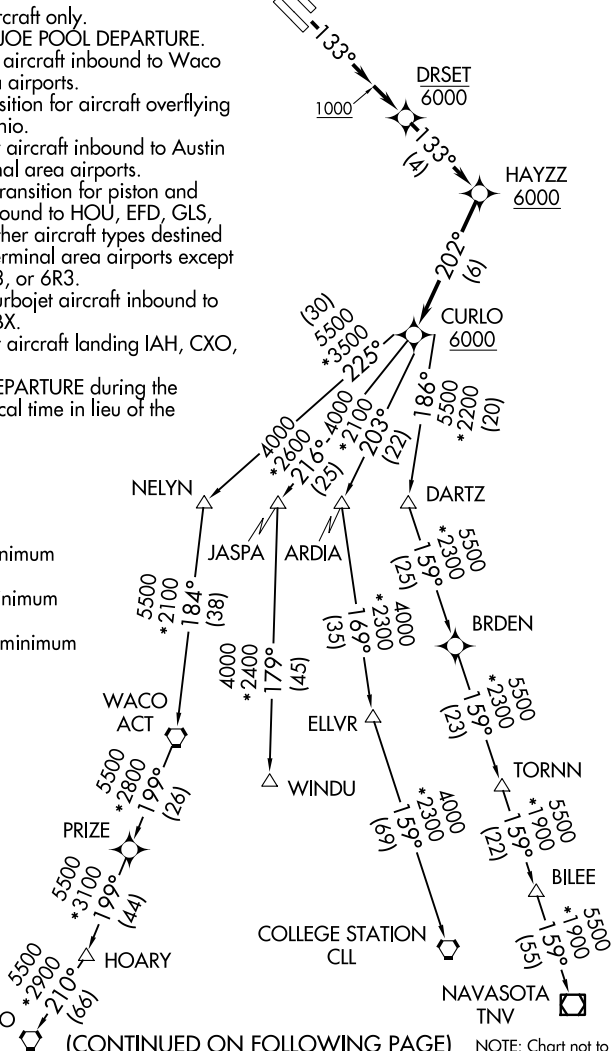
- NOTE: For use by turbojet aircraft only.
- NOTE: Props file and expect JOE POOL DEPARTURE.
- NOTE: WACO Transition for aircraft inbound to Waco or Gray terminal area airports.
- NOTE: SAN ANTONIO Transition for aircraft overflying Centex and San Antonio.
- NOTE: WINDU Transition for aircraft inbound to Austin or San Antonio terminal area airports.
- NOTE: COLLEGE STATION Transition for piston and turboprop aircraft inbound to HOU, EFD, GLS, or LBX. Also, for all other aircraft types destined to all other Houston terminal area airports except IAH, CXO, DWH, T78, or 6R3.
- NOTE: ELLVR Transition for turbojet aircraft inbound to HOU, EFD, GLS, or LBX.
- NOTE: TORNN Transition for aircraft landing IAH, CXO, DWH, T78, or 6R3.
- NOTE: Use the JOE POOL DEPARTURE during the period 2100-0600 local time in lieu of the CURLO DEPARTURE.

TAKEOFF MINIMUMS

Rwys 13L: Standard with minimum climb of 262'/NM to 1600.
 Rwys 13R: Standard with minimum climb of 315'/NM to 1700.
 Rwys 31L/R: Standard with minimum climb of 500'/NM to 1000.



SAN ANTONIO
 SAT



(CONTINUED ON FOLLOWING PAGE)

NOTE: Chart not to scale.

SC-2, 14 MAY 2026 to 11 JUN 2026

SC-2, 14 MAY 2026 to 11 JUN 2026

CURLO SIX DEPARTURE (RNAV)