

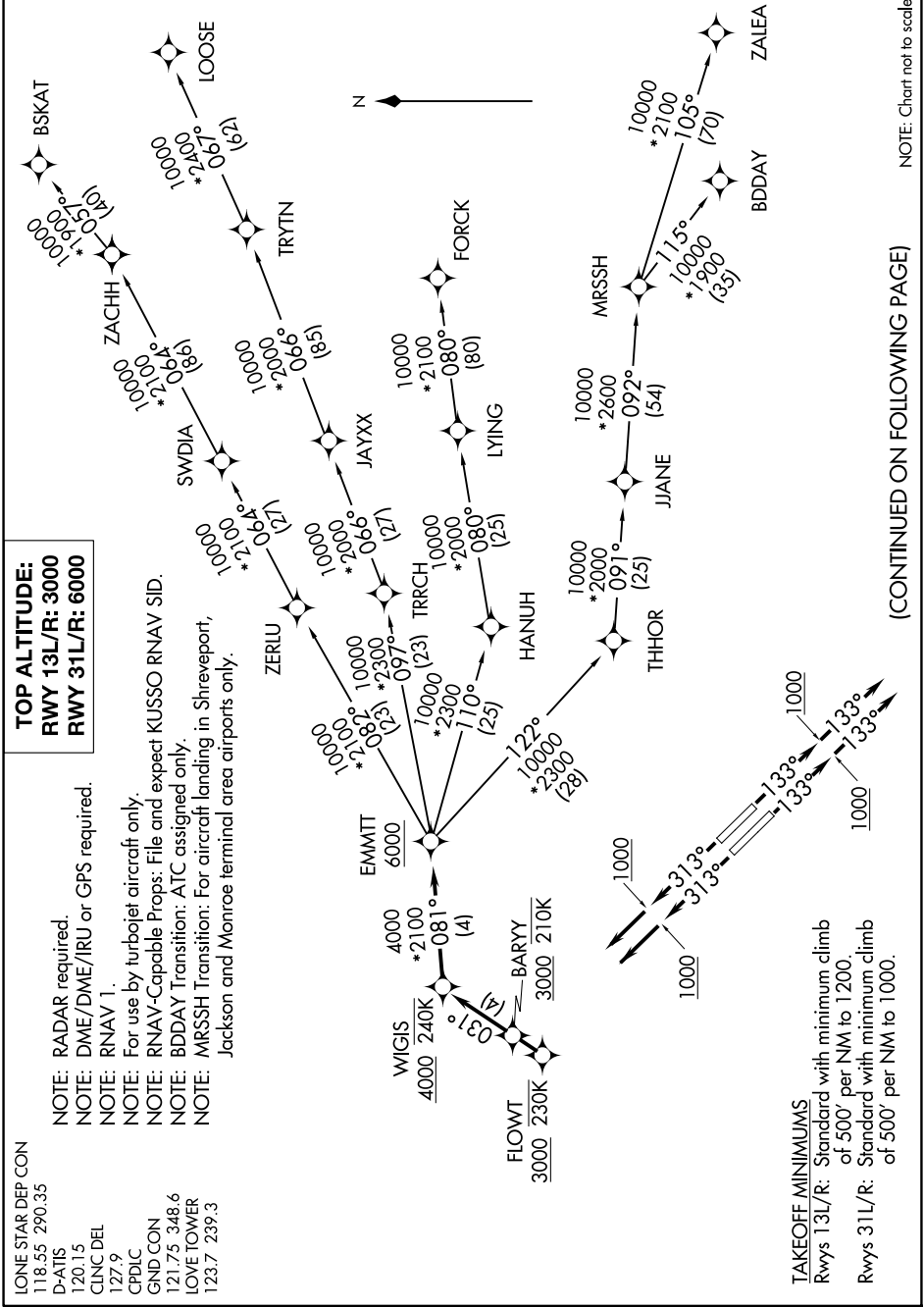
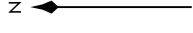
EMMTT FOUR DEPARTURE (RNAV)

SC-2, 14 MAY 2026 to 11 JUN 2026

TOP ALTITUDE:
RWY 13L/R: 3000
RWY 31L/R: 6000

- NOTE: RADAR required.
- NOTE: DME/DME/IRU or GPS required.
- NOTE: RNAV 1.
- NOTE: For use by turbojet aircraft only.
- NOTE: RNAV-Capable Props: File and expect KUSSO RNAV SID.
- NOTE: BDDAY Transition: ATC assigned only.
- NOTE: MRSSH Transition: For aircraft landing in Shreveport, Jackson and Monroe terminal area airports only.

- LONE STAR DEP CON 118.55 290.35
- D-ATIS 120.15
- CINC DEL 127.9
- CPDLC
- GND CON 121.75 348.6
- LOVE TOWER 123.7 239.3



NOTE: Chart not to scale.

(CONTINUED ON FOLLOWING PAGE)

SC-2, 14 MAY 2026 to 11 JUN 2026

EMMTT FOUR DEPARTURE (RNAV)