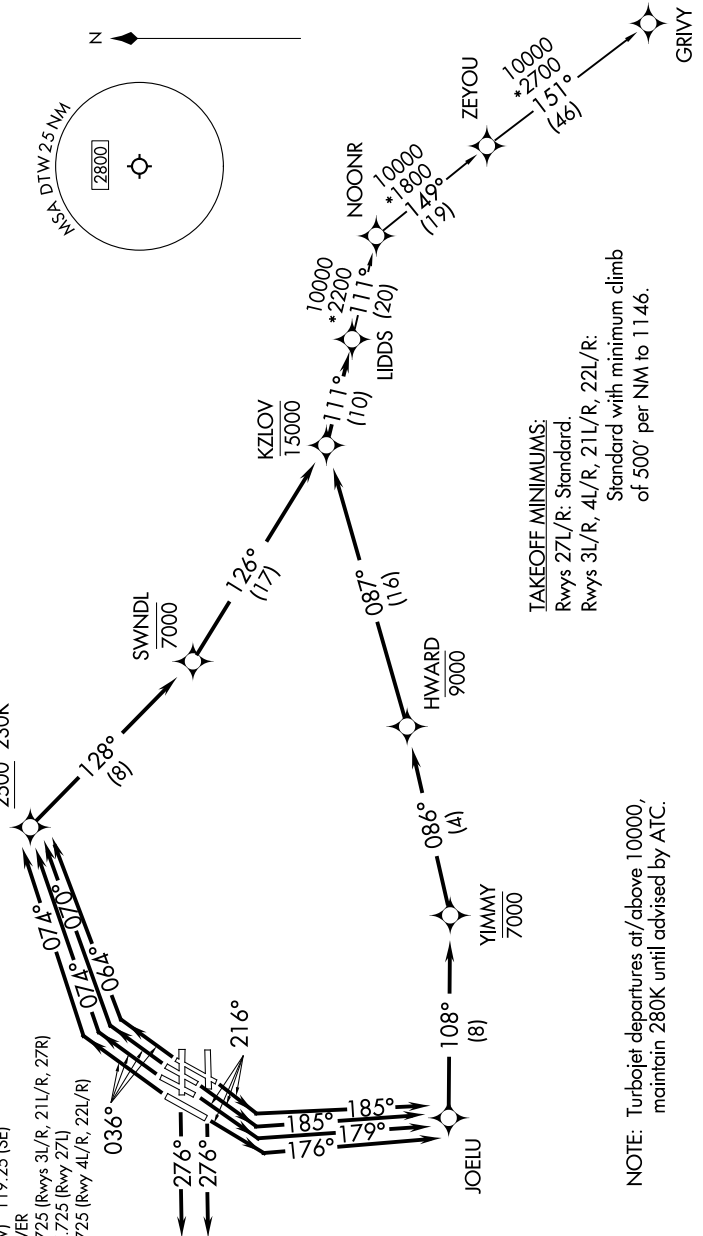


LIDDS FOUR DEPARTURE (RNAV)

**TOP ALTITUDE:
17000**

RNAV 1 - DME/DME/IRU or GPS.
RADAR required.
RADAR required for non-GPS equipped aircraft.

DETROIT DEP CON
132.025 284.0
D-ATIS 118.125
CLNC DEL 120.65
CPDIC
GND CON
121.8 (NW) 119.45 (NE)
132.725 (SW) 119.25 (SE)
METRO TOWER
118.4 317.725 (Rwys 3L/R, 21L/R, 27R)
128.75 317.725 (Rwy 27L)
135.0 317.725 (Rwy 4L/R, 22L/R)



TAKEOFF MINIMUMS:
Rwys 27L/R: Standard
Rwys 3L/R, 4L/R, 21L/R, 22L/R:
Standard with minimum climb
of 500' per NM to 1146.

NOTE: Turbojet departures at/above 10000,
maintain 280K until advised by ATC.

NOTE: Chart not to scale.

(CONTINUED ON FOLLOWING PAGE)