

WAAS CH 69424 W23A	APP CRS 231°	Rwy Ldg TDZE 16 Apt Elev 17	5545
--	------------------------	---	-------------

RNAV (GPS) RWY 23

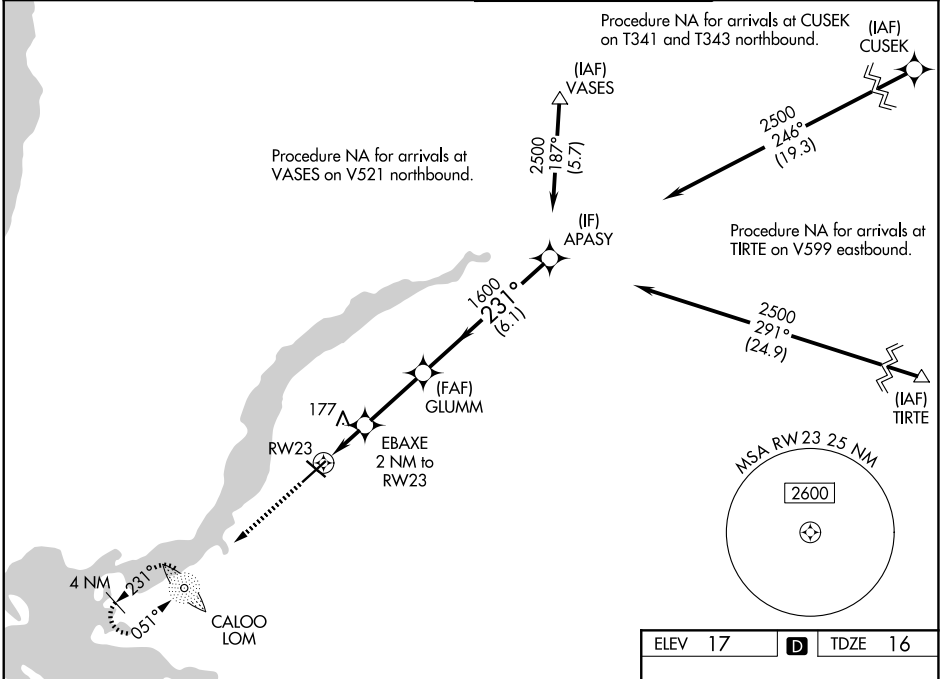
PAGE FLD (FMY)

RNP APCH - GPS.

⚠ Rwy 23 helicopter visibility reduction below 3/4 SM NA. When Circling to Rwy 31 at night, operational VGSI required, remain on or above VGSI glidepath until threshold.
⚠ For uncompensated Baro-VNAV systems, LNAV/VNAV NA below 5°C or above 54°C.

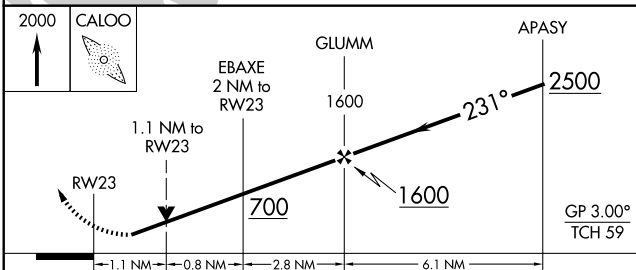
MISSED APPROACH: Climb to 2000 direct CALOO LOM and hold, continue climb-in-hold.

ATIS 123.725	FORT MYERS APP CON ★ 125.15 306.2 (5, 13) 126.8 306.2 (23, 31)	PAGE TOWER ★ 119.0 (CTAF) 0 306.95	GND CON 121.7
------------------------	--	---	-------------------------



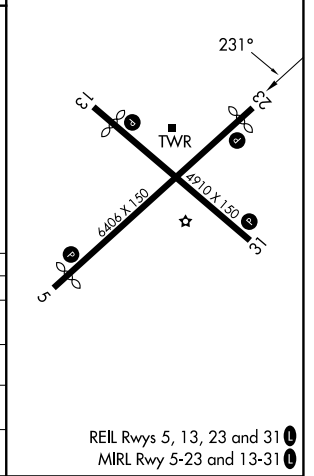
SE-3, 14 MAY 2026 to 11 JUN 2026

SE-3, 14 MAY 2026 to 11 JUN 2026



ELEV 17	D	TDZE 16
---------	----------	---------

CATEGORY	A	B	C	D
LPV DA	278-7/8		262 (300-7/8)	
LNAV/VNAV DA	392-1		376 (400-1)	
LNAV MDA	440-1	424 (500-1)	440-1 1/4	424 (500-1 1/4)
CIRCLING	540-1	523 (600-1)	600-1 1/2 583 (600-1 1/2)	680-2 663 (700-2)



REIL Rwy 5, 13, 23 and 31 **1**
MIRL Rwy 5-23 and 13-31 **1**