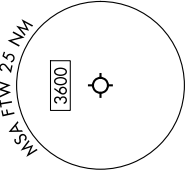


BOTCH TWO DEPARTURE (RNAV)

FORT WORTH, TEXAS

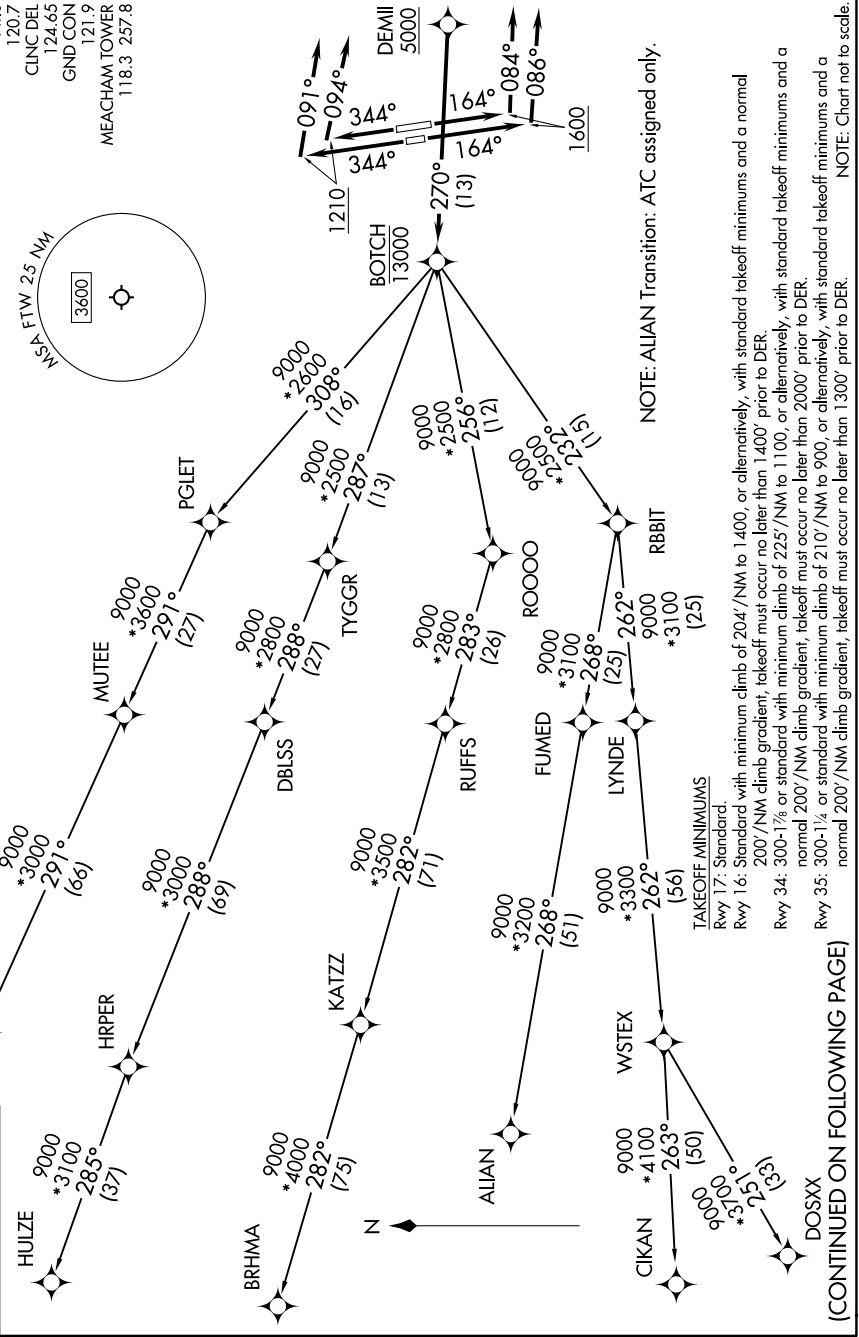
LONE STAR DEP CON
118.1 306.95 (N)
135.975 379.9 (S)
ATIS
120.7

CUNC DEL
124.65
GND CON
121.9
MEACHAM TOWER
118.3 257.8



RNAV 1 - DME/DME/IRU or GPS required.
RADAR required.

TOP ALTITUDE:
ASSIGNED BY ATC



NOTE: ALIAN Transition: ATC assigned only.

TAKEOFF MINIMUMS
Rwy 17: Standard.
Rwy 16: Standard with minimum climb of 204'/NM to 1400, or alternatively, with standard takeoff minimums and a normal 200'/NM climb gradient; takeoff must occur no later than 1400' prior to DER.

Rwy 34: 300-1% or standard with minimum climb of 225'/NM to 1100, or alternatively, with standard takeoff minimums and a normal 200'/NM climb gradient; takeoff must occur no later than 2000' prior to DER.
Rwy 35: 300-1% or standard with minimum climb of 210'/NM to 900, or alternatively, with standard takeoff minimums and a normal 200'/NM climb gradient; takeoff must occur no later than 1300' prior to DER.

(CONTINUED ON FOLLOWING PAGE)

NOTE: Chart not to scale.

BOTCH TWO DEPARTURE (RNAV)