

TEXOMA FIVE DEPARTURE

LONE STAR DEP CON
118.1 306.95 (N)
135.975 379.9 (S)
ATIS
120.7
CLINC DEL
124.65
GND CON
121.9
MEACHAM TOWER
118.3 257.8

**TOP ALTITUDE:
ASSIGNED BY ATC**

TULSA
114.4 TUL :...:
Chan 91

RADAR and DME required.

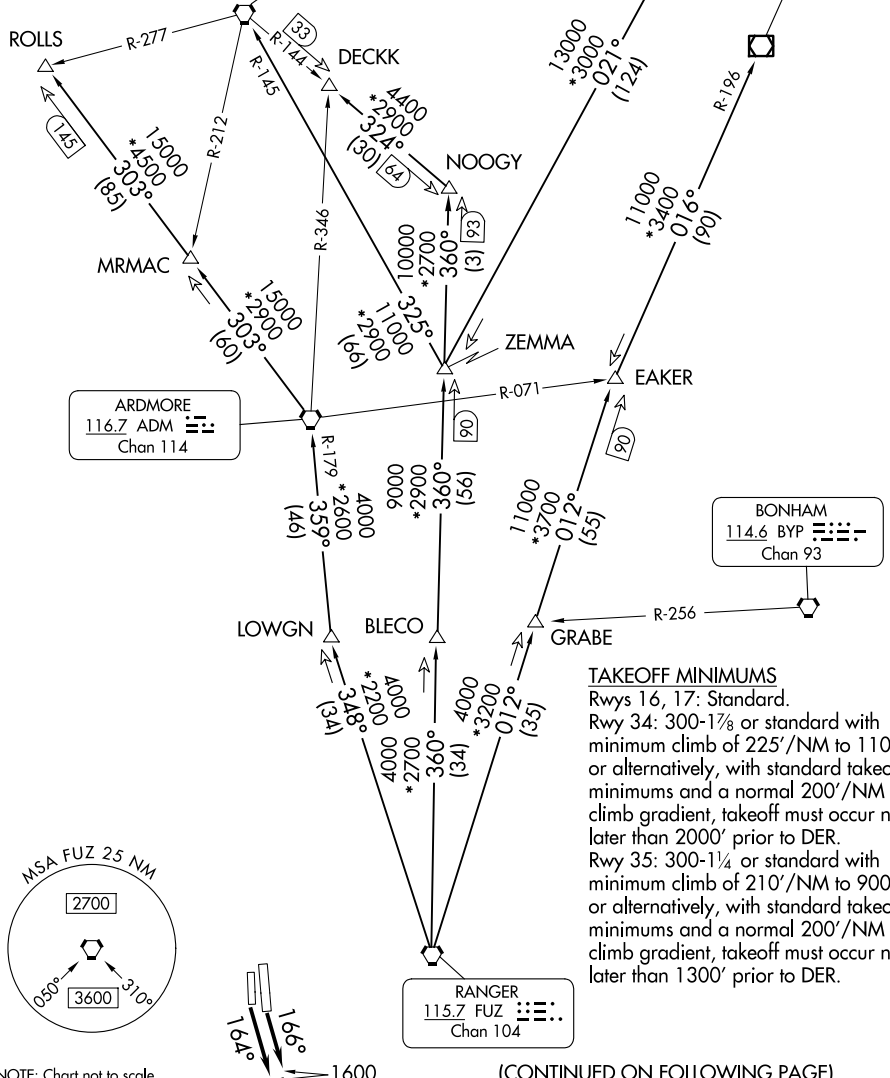
WILL ROGERS
114.1 IRW :...:
Chan 88

OKMULGEE
114.9 OKM :...:
Chan 96

ARDMORE
116.7 ADM :...:
Chan 114

BONHAM
114.6 BYP :...:
Chan 93

RANGER
115.7 FUZ :...:
Chan 104



TAKEOFF MINIMUMS
Rwys 16, 17: Standard.
Rwy 34: 300-1/8 or standard with minimum climb of 225'/NM to 1100, or alternatively, with standard takeoff minimums and a normal 200'/NM climb gradient, takeoff must occur no later than 2000' prior to DER.
Rwy 35: 300-1/4 or standard with minimum climb of 210'/NM to 900, or alternatively, with standard takeoff minimums and a normal 200'/NM climb gradient, takeoff must occur no later than 1300' prior to DER.

NOTE: Chart not to scale.

(CONTINUED ON FOLLOWING PAGE)

SC-2, 14 MAY 2026 to 11 JUN 2026

SC-2, 14 MAY 2026 to 11 JUN 2026

TEXOMA FIVE DEPARTURE