

# KINGDOM FIVE DEPARTURE

(CONTINUED ON FOLLOWING PAGE)

SC-2, 14 MAY 2026 to 11 JUN 2026

RADAR and DME required.

**TOP ALTITUDE:  
ASSIGNED BY ATC**

LONE STAR DEP CON  
125.8 257.95  
A115 \*

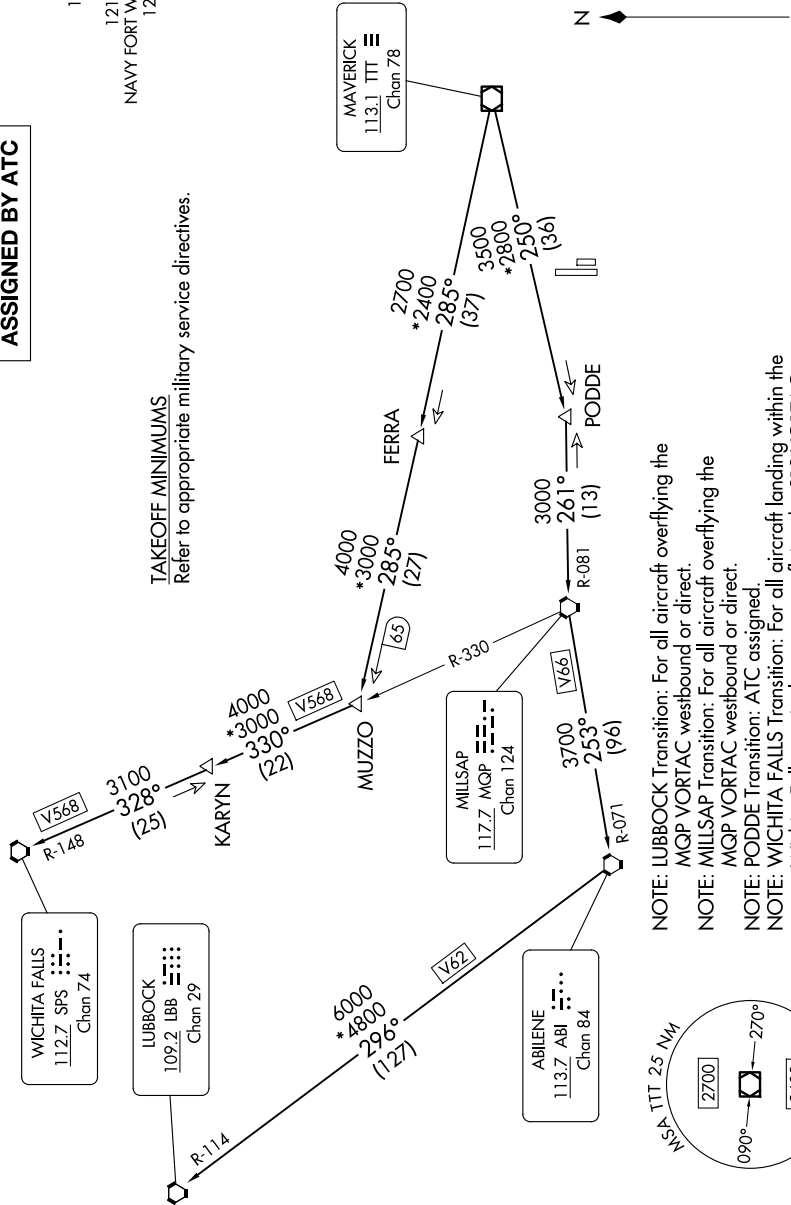
351.675  
CINC DEL

126.4 254.325  
GND CON

121.675 279.575  
120.95 269.325

NAVY FORT WORTH TOWER \*

**TAKEOFF MINIMUMS**  
Refer to appropriate military service directives.



- NOTE: LUBBOCK Transition: For all aircraft overlying the MQP VORTAC westbound or direct.
- NOTE: MILLSAP Transition: For all aircraft overlying the MQP VORTAC westbound or direct.
- NOTE: PODDE Transition: ATC assigned.
- NOTE: WICHITA FALLS Transition: For all aircraft landing within the Wichita Falls terminal area or overlying the SPS VORTAC.
- NOTE: For all aircraft requesting 17000 and below.

NOTE: Chart not to scale.

# KINGDOM FIVE DEPARTURE

SC-2, 14 MAY 2026 to 11 JUN 2026