

NANDR FOUR DEPARTURE (RNAV)

AL-160 (FAA)

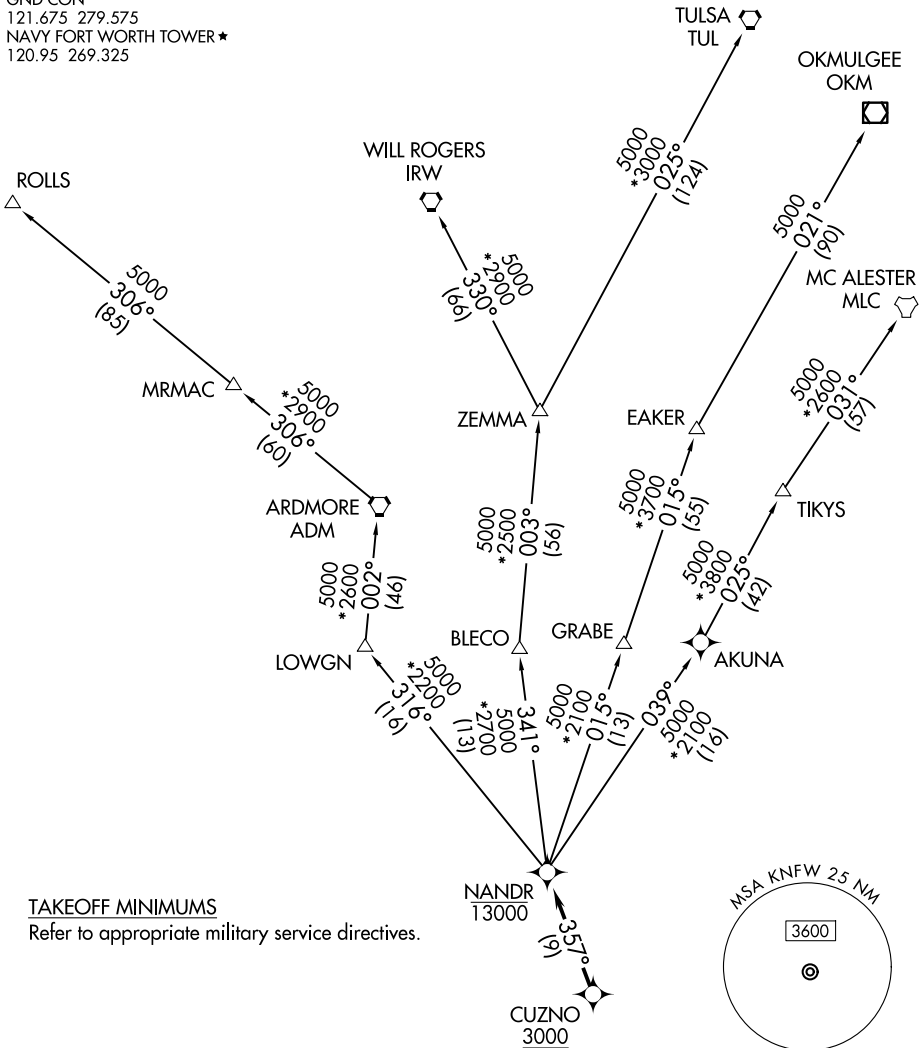
FORT WORTH, TEXAS

LONE STAR DEP CON
 125.8 257.95
 ATIS*
 351.675
 GND CON
 121.675 279.575
 NAVY FORT WORTH TOWER*
 120.95 269.325

RNAV 1 - DME/DME/IRU or GPS required.

RADAR required.

**TOP ALTITUDE:
ASSIGNED BY ATC**



TAKEOFF MINIMUMS

Refer to appropriate military service directives.

- NOTE: EAKER Transition: For TUL terminal arrivals only.
- NOTE: TULSA Transition: For all aircraft overflying TUL VORTAC.
- NOTE: Aircraft arriving to the Oklahoma City terminal area, file and expect the ZEMMA enroute transition.

NOTE: Chart not to scale.

(CONTINUED ON FOLLOWING PAGE)

SC-2, 14 MAY 2026 to 11 JUN 2026

SC-2, 14 MAY 2026 to 11 JUN 2026