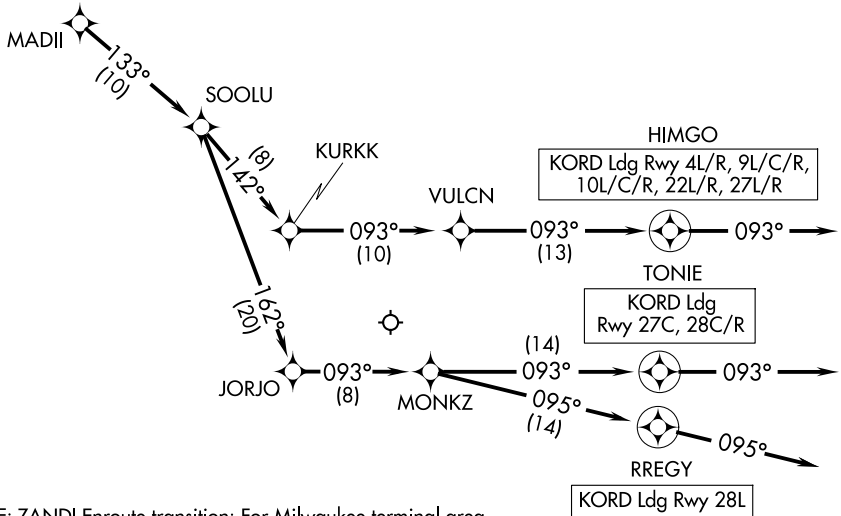


# MADII SEVEN ARRIVAL (RNAV) Arrival Routes

CHICAGO O'HARE INTL (ORD)  
CHICAGO, ILLINOIS

RNAV 1 - DME/DME/IRU or GPS.  
RADAR required.

CHICAGO APP CON  
119.0 292.125  
D-ATIS  
135.4 282.225



NOTE: ZANDI Enroute transition: For Milwaukee terminal area departures only.

NOTE: VIKKS Enroute transition: Do not file - to be assigned by ATC.

NOTE: ORD landing east: Expect RADAR vectors to final approach course after MADII.

NOTE: Chart not to scale.

## ARRIVAL ROUTE DESCRIPTION

From MADII on track 133° to SOOLU.

LANDING RUNWAY 4L/R, 9L/C/R, 10L/C/R, 22L/R, 27L/R: From SOOLU on track 142° to KURKK, then on track 093° to VULCN, then on track 093° to HIMGO, then on track 093°. Expect RADAR vectors to final approach course.

LANDING RUNWAY 27C, 28C/R: From SOOLU on track 162° to JORJO, then on track 093° to MONKZ, then on track 093° to TONIE, then on track 093°. Expect RADAR vectors to final approach course.

LANDING RUNWAY 28L: From SOOLU on track 162° to JORJO, then on track 093° to MONKZ, then on track 095° to RREGY, then on track 095°. Expect RADAR vectors to final approach course.