

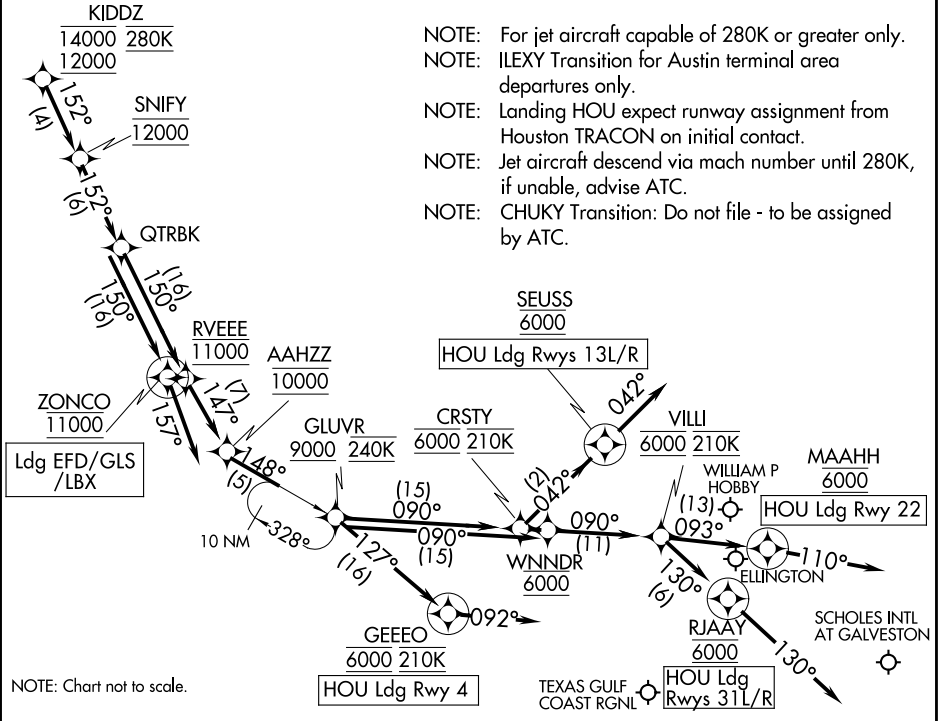
# KIDZ FIVE ARRIVAL (RNAV) Arrival Routes

HOUSTON, TEXAS

HOUSTON APP CON  
119.175 291.675  
EFD ATIS  
135.575 269.9  
HOU D-ATIS  
124.6

RNAV 1- DME/DME/IRU or GPS.  
RADAR required.

- NOTE: For jet aircraft capable of 280K or greater only.
- NOTE: ILEXY Transition for Austin terminal area departures only.
- NOTE: Landing HOU expect runway assignment from Houston TRACON on initial contact.
- NOTE: Jet aircraft descend via mach number until 280K, if unable, advise ATC.
- NOTE: CHUKY Transition: Do not file - to be assigned by ATC.



NOTE: Chart not to scale.

### ARRIVAL ROUTE DESCRIPTION

**HOU:** From KIDZ on track 152° to cross SNIFY at 12000, then on track 152° to QTRBK, then on track 150° to cross RVEEE at 11000, then on track 147° to cross AAHZZ at 10000, then on track 148° to cross GLUVR at or above 9000 and at 240K.

**LANDING HOU RUNWAY 4:** From GLUVR on track 127° to cross GEEEO at 6000 and at 210K, then on track 092°. Expect ILS or LOC Rwy 04 approach or RADAR vectors to final approach course.

**LANDING HOU RUNWAYS 13L/R:** From GLUVR on track 090° to cross CRSTY at 6000 and at 210K, then on track 042° to cross SEUSS at 6000, then on track 042°. Expect RADAR vectors to final approach course.

**LANDING HOU RUNWAY 22:** From GLUVR on track 090° to cross WNNDR at 6000, then on track 090° to cross VILLI at 6000 and at 210K, then on track 093° to cross MAAHH at 6000, then on track 110°. Expect RADAR vectors to final approach course.

**LANDING HOU RUNWAYS 31L/R:** From GLUVR on track 090° to cross WNNDR at 6000, then on track 090° to cross VILLI at 6000 and at 210K, then on track 130° to RJAAY at 6000, then on track 130°. Expect RADAR vectors to final approach course.

**LANDING GLS/LBX/EFD:** From KIDZ on track 152° to cross SNIFY at 12000, then on track 152° to QTRBK, then on track 150° to cross ZONCO at 11000, then on track 157°. Expect RADAR vectors to final approach course.