

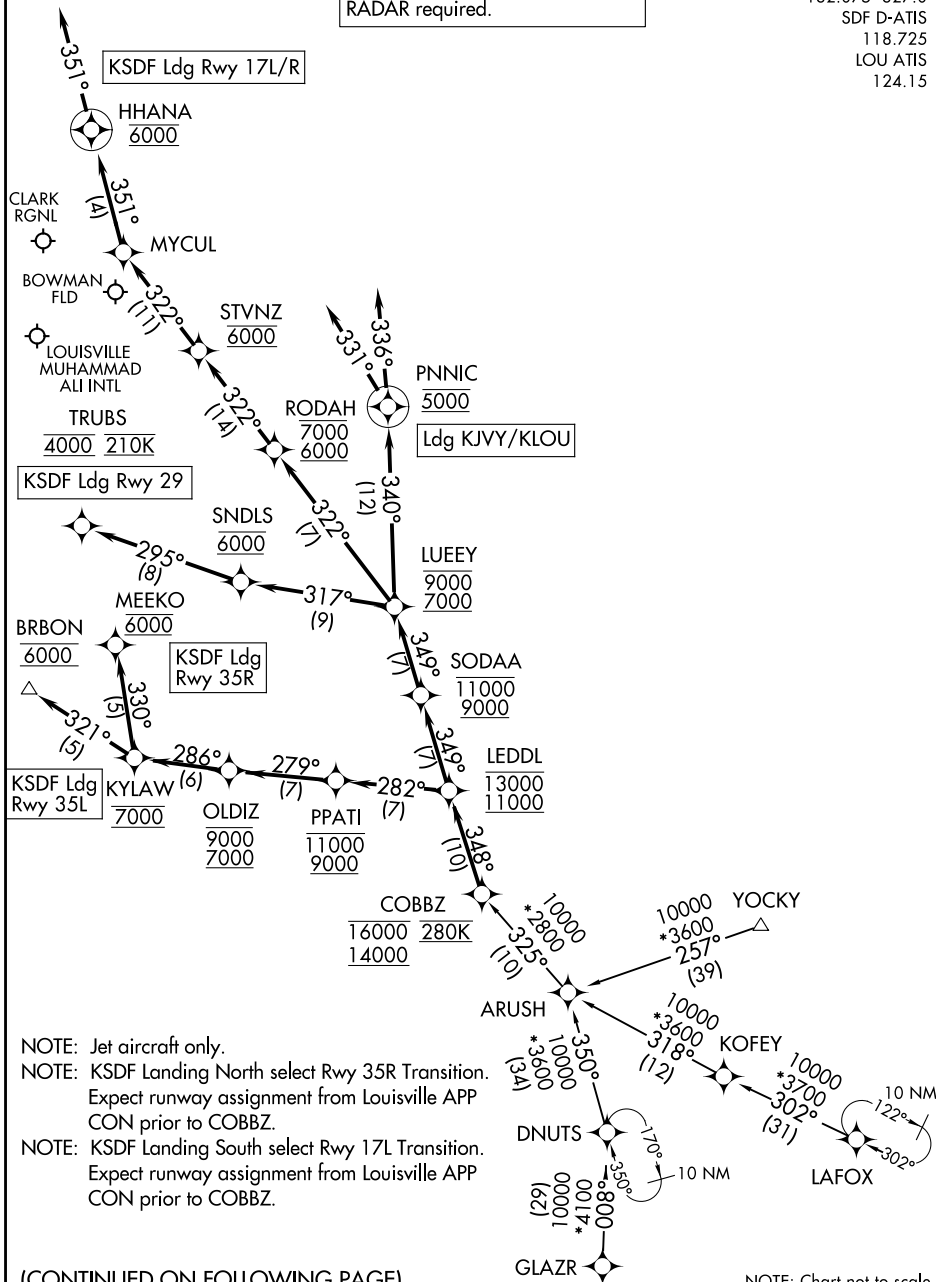
LEDDL ONE ARRIVAL (RNAV)

LOUISVILLE, KENTUCKY

RNAV 1 - DME/DME/IRU or GPS.

RADAR required.

LOUISVILLE APP CON
 132.075 327.0
 SDF D-ATIS
 118.725
 LOU ATIS
 124.15



NOTE: Jet aircraft only.
 NOTE: KSDF Landing North select Rwy 35R Transition. Expect runway assignment from Louisville APP CON prior to COBBZ.
 NOTE: KSDF Landing South select Rwy 17L Transition. Expect runway assignment from Louisville APP CON prior to COBBZ.

(CONTINUED ON FOLLOWING PAGE)

NOTE: Chart not to scale.

LEDDL ONE ARRIVAL (RNAV)

LOUISVILLE, KENTUCKY

SE-1, 14 MAY 2026 to 11 JUN 2026

SE-1, 14 MAY 2026 to 11 JUN 2026