

GLADZ FOUR DEPARTURE (RNAV)

MIAMI-OPA LOCKA EXEC (OPF)
MIAMI, FLORIDA

SE-3, 14 MAY 2026 to 11 JUN 2026

**TOP ALTITUDE:
ASSIGNED BY ATC**

RNAV-1 DME/DME/IRU or GPS.

RADAR required for NON-GPS equipped aircraft.

RADAR required.

MIAMI DEP CON
126.85 290.325
ATIS
125.9
CLNC DEL
119.2
GND CON
120.025
OPA LOCKA TOWER*
134.675 (CTAF)

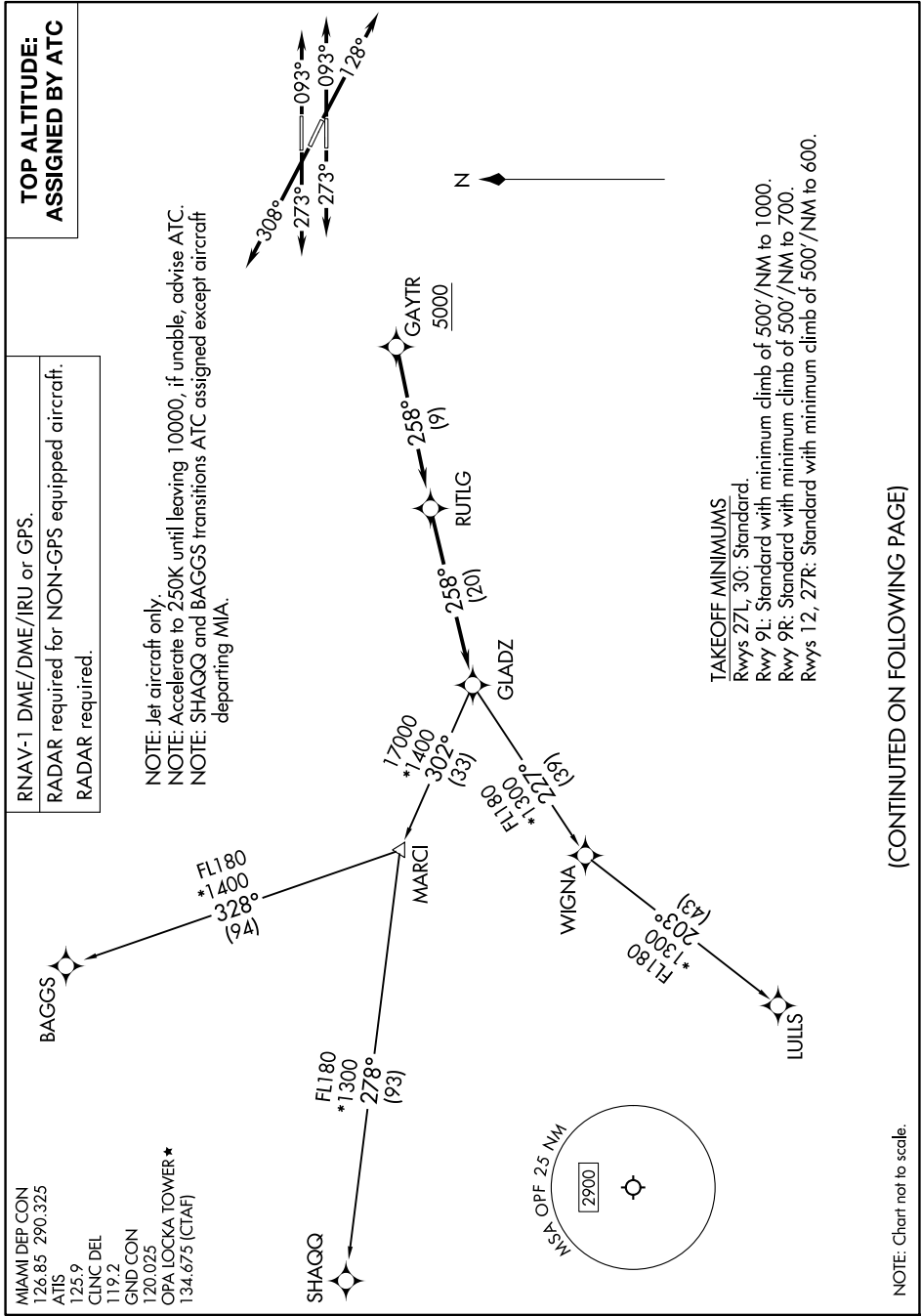
NOTE: Jet aircraft only.
NOTE: Accelerate to 250K until leaving 10000, if unable, advise ATC.
NOTE: SHAGQ and BAGGS transitions ATC assigned except aircraft departing MIA.

TAKEOFF MINIMUMS
Rwys 27L, 30: Standard
Rwy 9L: Standard with minimum climb of 500'/NM to 1000.
Rwy 9R: Standard with minimum climb of 500'/NM to 700.
Rwys 12, 27R: Standard with minimum climb of 500'/NM to 600.

GLADZ FOUR DEPARTURE (RNAV)

(GLADZ4.GLADZ) 31OCT24

MIAMI, FLORIDA
MIAMI-OPA LOCKA EXEC (OPF)



(CONTINUED ON FOLLOWING PAGE)

SE-3, 14 MAY 2026 to 11 JUN 2026

NOTE: Chart not to scale.