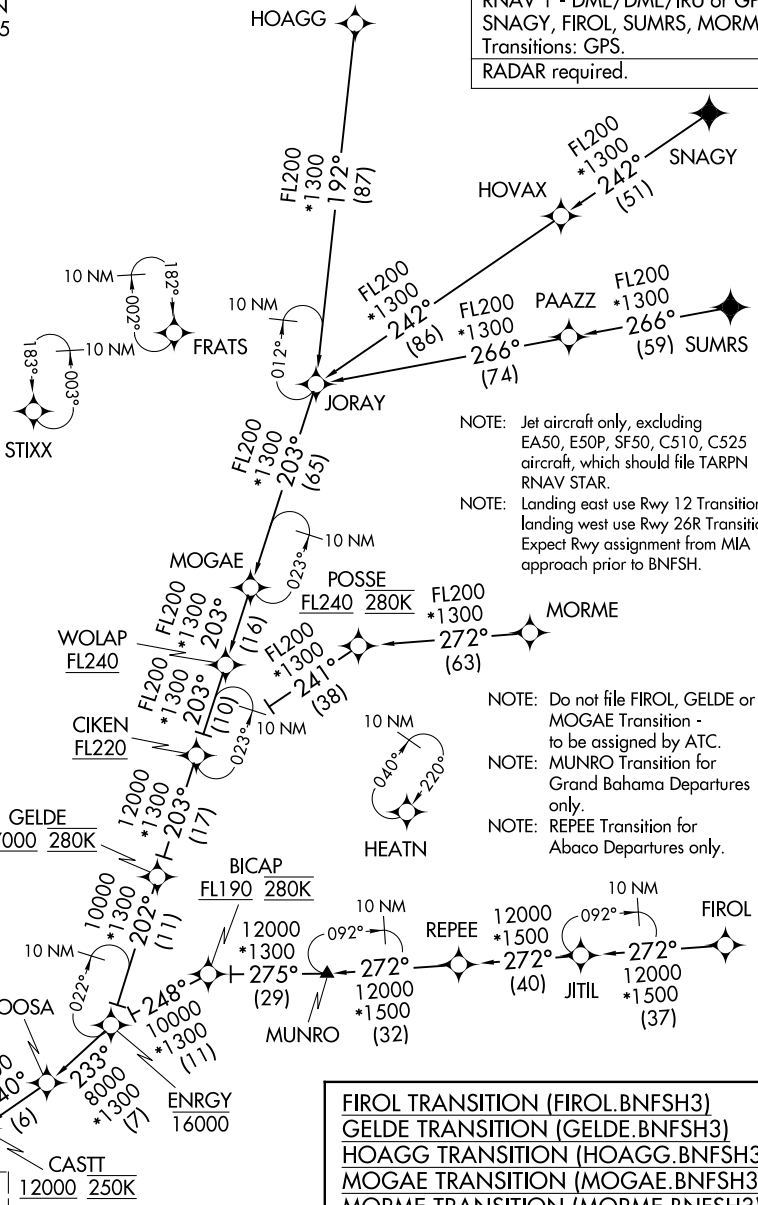


BNFSH THREE ARRIVAL (RNAV) Transition Routes

MIAMI, FLORIDA

MIAMI APP CON
 124.85 263.025
 KHST ATIS *
 132.275 269.9
 MIA D-ATIS
 119.15
 TMB ATIS
 124.0

RNAV 1 - DME/DME/IRU or GPS.
 SNAGY, FIROL, SUMRS, MORME
 Transitions: GPS.
 RADAR required.



NOTE: Jet aircraft only, excluding EA50, E50P, SF50, C510, C525 aircraft, which should file TARPEN RNAV STAR.
 NOTE: Landing east use Rwy 12 Transition, landing west use Rwy 26R Transition. Expect Rwy assignment from MIA approach prior to BNFSH.

NOTE: Do not file FIROL, GELDE or MOGAE Transition - to be assigned by ATC.
 NOTE: MUNRO Transition for Grand Bahama Departures only.
 NOTE: REPEE Transition for Abaco Departures only.

- FIROL TRANSITION (FIROL.BNFSH3)
- GELDE TRANSITION (GELDE.BNFSH3)
- HOAGG TRANSITION (HOAGG.BNFSH3)
- MOGAE TRANSITION (MOGAE.BNFSH3)
- MORME TRANSITION (MORME.BNFSH3)
- MUNRO TRANSITION (MUNRO.BNFSH3)
- REPEE TRANSITION (REPEE.BNFSH3)
- SNAGY TRANSITION (SNAGY.BNFSH3)
- SUMRS TRANSITION (SUMRS.BNFSH3)

BNFSH
 11000
 See following page for arrival routes.

(CONTINUED ON FOLLOWING PAGE)
 NOTE: Chart not to scale.

SE-3, 14 MAY 2026 to 11 JUN 2026

SE-3, 14 MAY 2026 to 11 JUN 2026

BNFSH THREE ARRIVAL (RNAV) Transition Routes

MIAMI, FLORIDA