

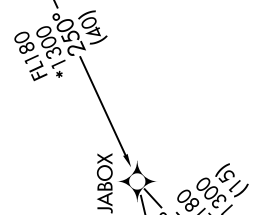
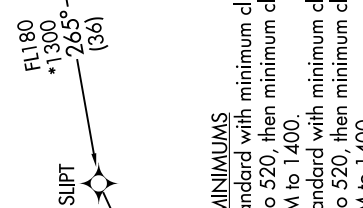
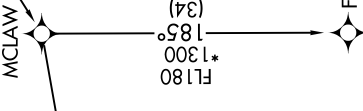
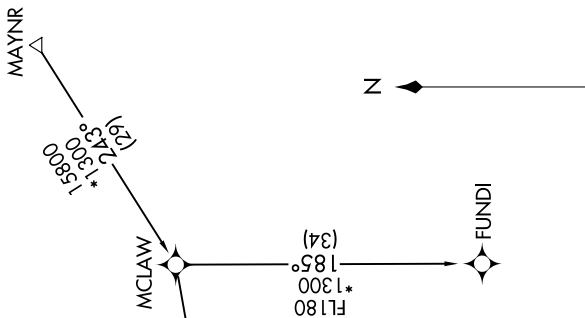
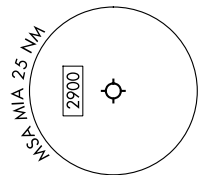
MAYNR THREE DEPARTURE (RNAV) Transition Routes

SE-3, 14 MAY 2026 to 11 JUN 2026

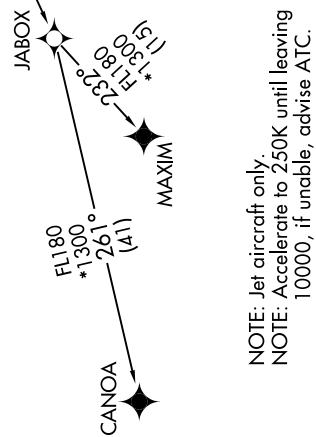
RNAV 1 - DME/DME/IRU or GPS.
 From SUIPT to MAXIM: RNAV 1 - GPS.
 From SUIPT to CANOA: RNAV 1 - GPS.
 RADAR required for non-GPS equipped aircraft.
 RADAR required.

**TOP ALTITUDE:
5000**

MIAMI DEP CON
 125.5 354.1
 D-ATIS
 133.675
 CLNC DEL
 135.35
 CPDLC
 GND CON
 (Rwys 8L/R, 12, 26L/R)
 121.8 348.6
 (Rwys 9, 27, 30)
 127.5 348.6
 MIAMI TOWER
 118.3 256.9



TAKEOFF MINIMUMS
 Rwy 8L: Standard with minimum climb of 500'/NM to 520, then minimum climb of 215'/NM to 1400.
 Rwy 8R: Standard with minimum climb of 500'/NM to 520, then minimum climb of 235'/NM to 1400.
 Rwy 9: Standard with minimum climb of 500'/NM to 520, then minimum climb of 240'/NM to 1400.
 Rwy 12: Standard with minimum climb of 500'/NM to 520, then minimum climb of 230'/NM to 1400.
 Rwys 26L/R, 27, 30: Standard with minimum climb of 500'/NM to 520.



NOTE: Jet aircraft only.
 NOTE: Accelerate to 250K until leaving 10000, if unable, advise ATC.

(CONTINUED ON FOLLOWING PAGE)

NOTE: Chart not to scale.

SE-3, 14 MAY 2026 to 11 JUN 2026

MAYNR THREE DEPARTURE (RNAV) Transition Routes