

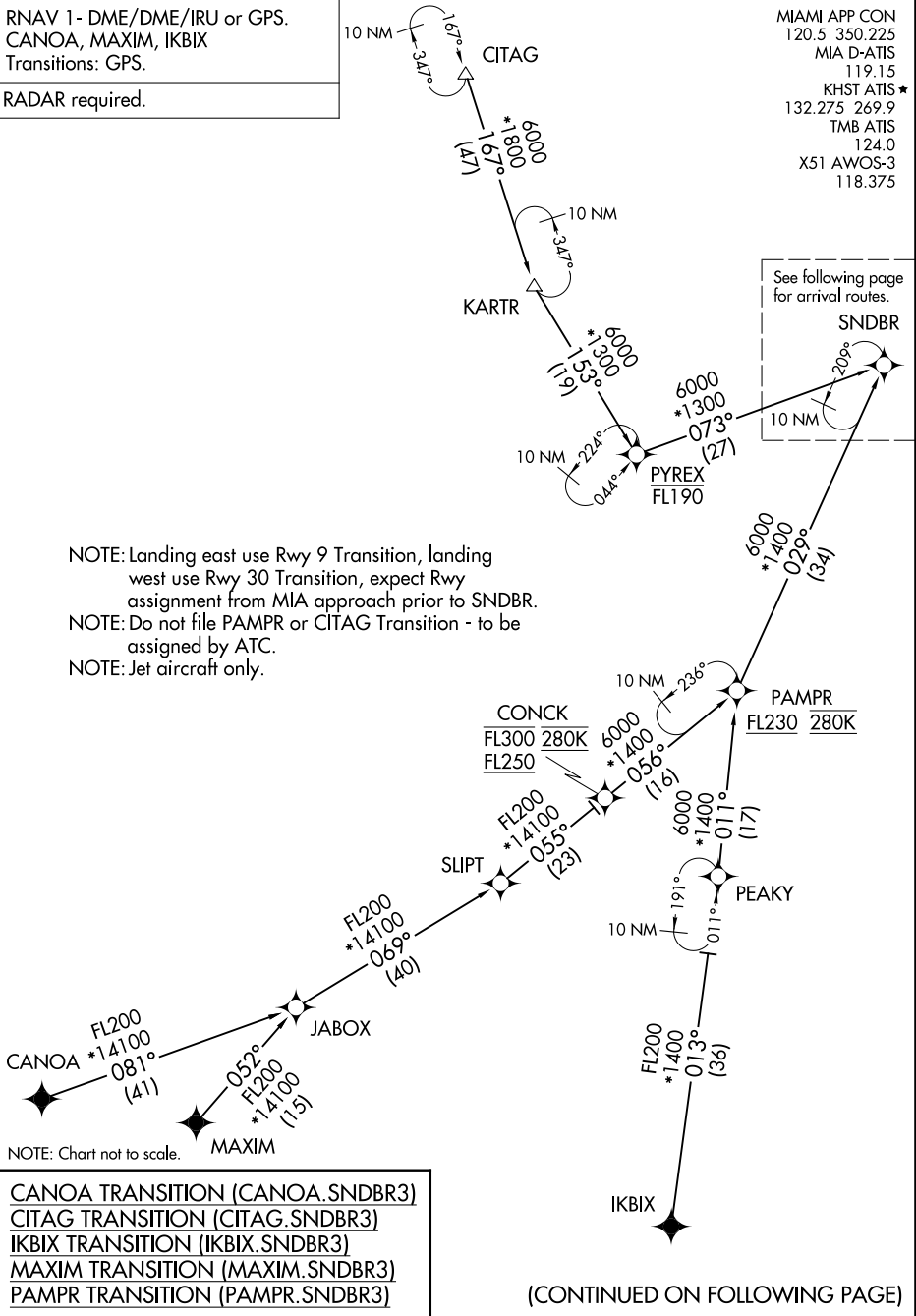
SNDBR THREE ARRIVAL (RNAV) Transition Routes

MIAMI, FLORIDA

RNAV 1 - DME/DME/IRU or GPS.
CANOA, MAXIM, IKBIX
Transitions: GPS.

RADAR required.

MIAMI APP CON
120.5 350.225
MIA D-ATIS
119.15
KHST ATIS *
132.275 269.9
TMB ATIS
124.0
X51 AWOS-3
118.375



NOTE: Landing east use Rwy 9 Transition, landing west use Rwy 30 Transition, expect Rwy assignment from MIA approach prior to SNDBR.
NOTE: Do not file PAMPR or CITAG Transition - to be assigned by ATC.
NOTE: Jet aircraft only.

NOTE: Chart not to scale.

- CANOA TRANSITION (CANOA.SNDBR3)
- CITAG TRANSITION (CITAG.SNDBR3)
- IKBIX TRANSITION (IKBIX.SNDBR3)
- MAXIM TRANSITION (MAXIM.SNDBR3)
- PAMPR TRANSITION (PAMPR.SNDBR3)

(CONTINUED ON FOLLOWING PAGE)

SE-3, 14 MAY 2026 to 11 JUN 2026

SE-3, 14 MAY 2026 to 11 JUN 2026

SNDBR THREE ARRIVAL (RNAV) Transition Routes

MIAMI, FLORIDA