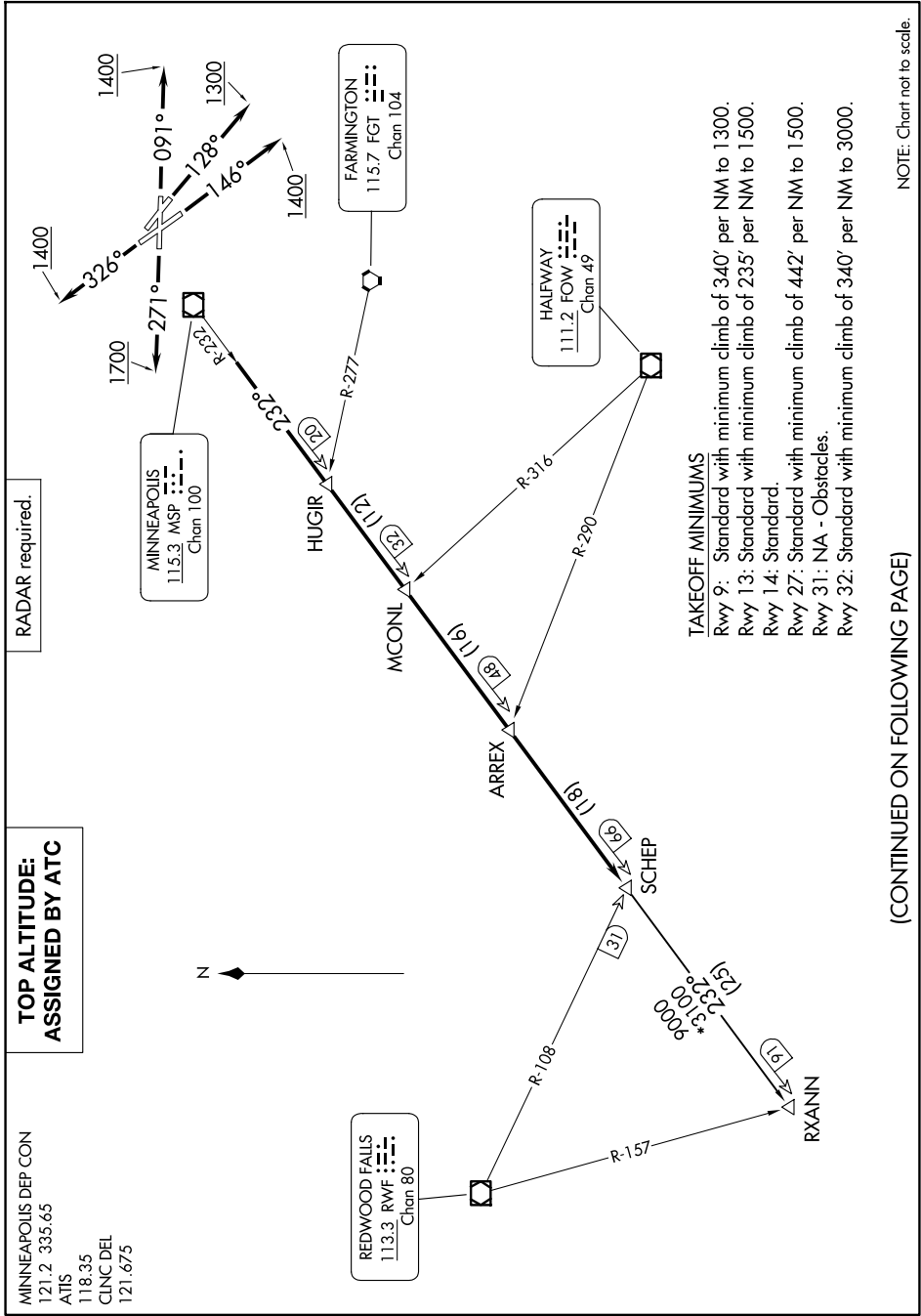


NC-1, 14 MAY 2026 to 11 JUN 2026



MINNEAPOLIS DEP CON  
121.2 335.65  
ATIS  
118.35  
CLNCDEL  
121.675

**TOP ALTITUDE:  
ASSIGNED BY ATC**

RADAR required.

**TAKEOFF MINIMUMS**  
 Rwy 9: Standard with minimum climb of 340' per NM to 1300.  
 Rwy 13: Standard with minimum climb of 235' per NM to 1500.  
 Rwy 14: Standard.  
 Rwy 27: Standard with minimum climb of 442' per NM to 1500.  
 Rwy 31: NA - Obstacles.  
 Rwy 32: Standard with minimum climb of 340' per NM to 3000.

(CONTINUED ON FOLLOWING PAGE)

NOTE: Chart not to scale.

NC-1, 14 MAY 2026 to 11 JUN 2026