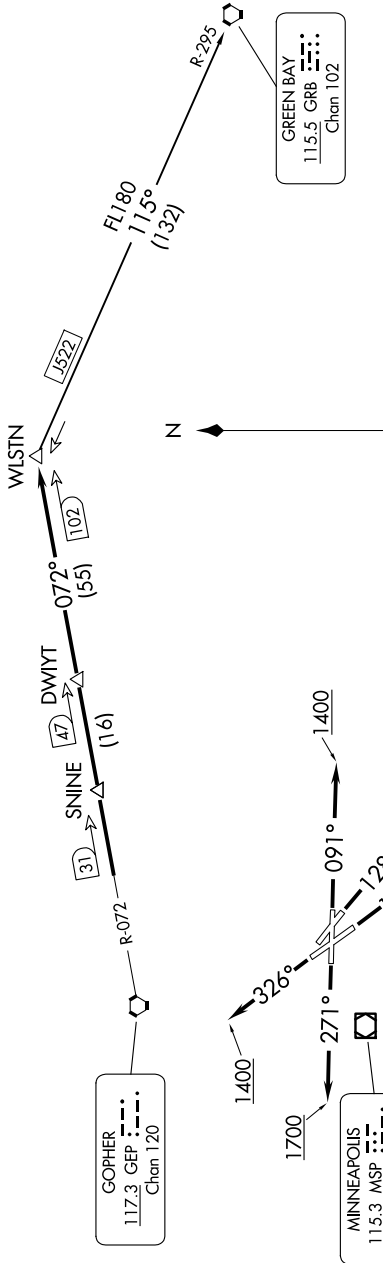


WLSTN SEVEN DEPARTURE

NC-1, 14 MAY 2026 to 11 JUN 2026

MINNEAPOLIS DEP CON
 121.2 335.65
 ATIS
 118.35
 CLNC DEL
 121.675
 ST. PAUL TOWER*
 119.1 257.8

**TOP ALTITUDE:
 (JETS) 7000/
 (PROPS) 5000**



GOPHER
 117.3 DEP
 Chan 120

MINNEAPOLIS
 115.3 MSP
 Chan 100

GREEN BAY
 115.5 GRB
 Chan 102

TAKEOFF MINIMUMS

- Rwy 9: Standard with minimum climb of 340' per NM to 1300.
- Rwy 13: Standard with minimum climb of 235' per NM to 1500.
- Rwy 14: Standard.
- Rwy 27: 600-2 or standard with minimum climb of 442' per NM to 1500.
- Rwy 31: NA-Obstacles.
- Rwy 32: Standard with minimum climb of 340' per NM to 3000.

NOTE: RADAR required.
 NOTE: Chart not to scale.

(CONTINUED ON FOLLOWING PAGE)

NC-1, 14 MAY 2026 to 11 JUN 2026

WLSTN SEVEN DEPARTURE