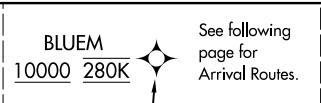
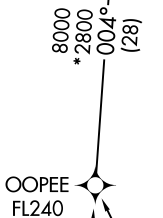
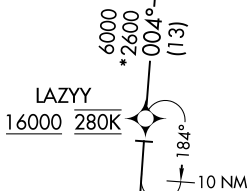


BLUEM FIVE ARRIVAL (RNAV) Transition Routes

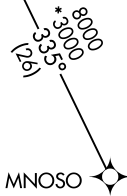
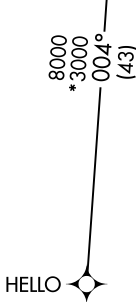
MINNEAPOLIS APP CON
135.475 335.5
D-ATIS
135.35 239.275



RNAV 1 - DME/DME/IRU or GPS.
RADAR required.



NOTE: Jet aircraft only.
NOTE: Expect "descend via" clearance and runway transition assignment by Center. Approach will assign landing runway.
NOTE: HELLO Transition: do not file, to be assigned by ATC.
NOTE: Jet aircraft descend via Mach number until 280K, if unable, advise ATC.



(CONTINUED ON FOLLOWING PAGE)

- HELLO TRANSITION (HELLO.BLUEM5)
- KICKR TRANSITION (KICKR.BLUEM5)
- LAZYY TRANSITION (LAZYY.BLUEM5)
- MNOSO TRANSITION (MNOSO.BLUEM5)
- OOPEE TRANSITION (OOPEE.BLUEM5)

NOTE: Chart note to scale.

NC-1, 14 MAY 2026 to 11 JUN 2026

NC-1, 14 MAY 2026 to 11 JUN 2026