

KKILR FOUR ARRIVAL (RNAV) Arrival Routes

AL-264 (FAA)

MINNEAPOLIS, MINNESOTA

NC-1, 14 MAY 2026 to 11 JUN 2026

MINNEAPOLIS APP CON
126.35 335.5
D-ATIS
135.35 239.275

ARRIVAL ROUTE DESCRIPTION

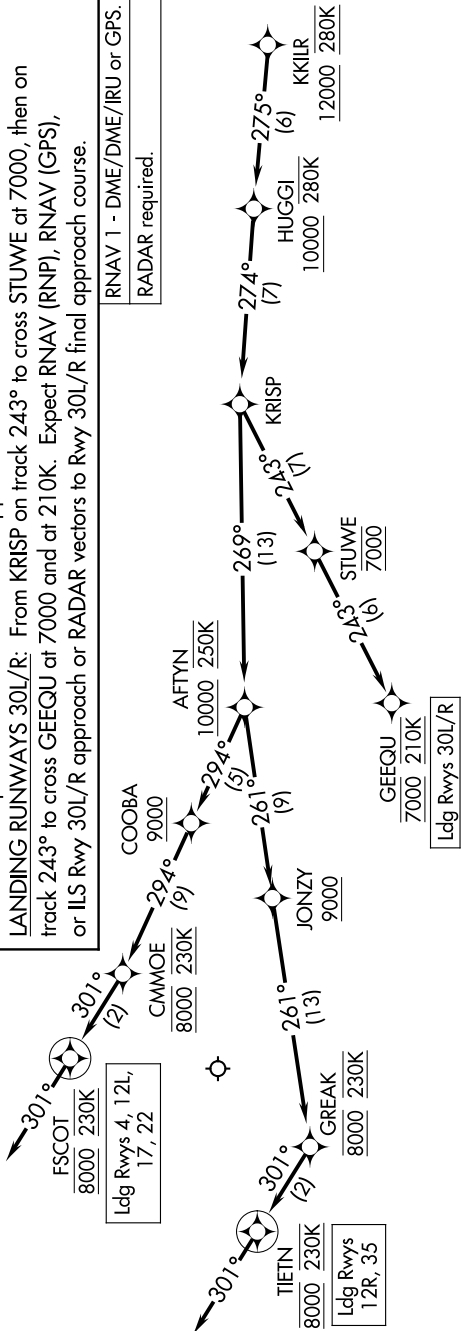
From KKILR on track 275° to cross HUGGI at or above 10000 and at or below 280K, then on track 274° to KRISP.

LANDING RUNWAYS 4, 12L, 17, 22: From KRISP on track 269° to cross AFTYN at or above 10000 and at 250K, then on track 294° to cross COOBA at or above 9000, then on track 294° to cross CMMOE at 8000 and at 230K, then on track 301° to cross FSCOT at 8000 and at 230K, then on track 301°. Expect RADAR vectors to final approach course.

LANDING RUNWAYS 12R, 35: From KRISP on track 269° to cross AFTYN at or above 10000 and at 250K, then on track 261° to cross JONZY at or above 9000, then on track 261° to cross GREAK at 8000 and at 230K, then on track 301° to cross TIETN at 8000 and at 230K, then on track 301°. Expect RADAR vectors to final approach course.

LANDING RUNWAYS 30L/R: From KRISP on track 243° to cross STUWE at 7000, then on track 243° to cross GEEQU at 7000 and at 210K. Expect RNAV (RNP), RNAV (GPS), or ILS Rwy 30L/R approach or RADAR vectors to Rwy 30L/R final approach course.

RNAV 1 - DME/DME/IRU or GPS.
RADAR required.



NOTE: Jet aircraft only.
 NOTE: Expect "descend via" clearance and runway transition assignment by Center.
 Approach will assign landing runway.
 NOTE: Jet aircraft descend via Mach number until 280K, if unable, advise ATC.

NOTE: Chart not to scale.

KKILR FOUR ARRIVAL (RNAV) Arrival Routes

MINNEAPOLIS, MINNESOTA

NC-1, 14 MAY 2026 to 11 JUN 2026