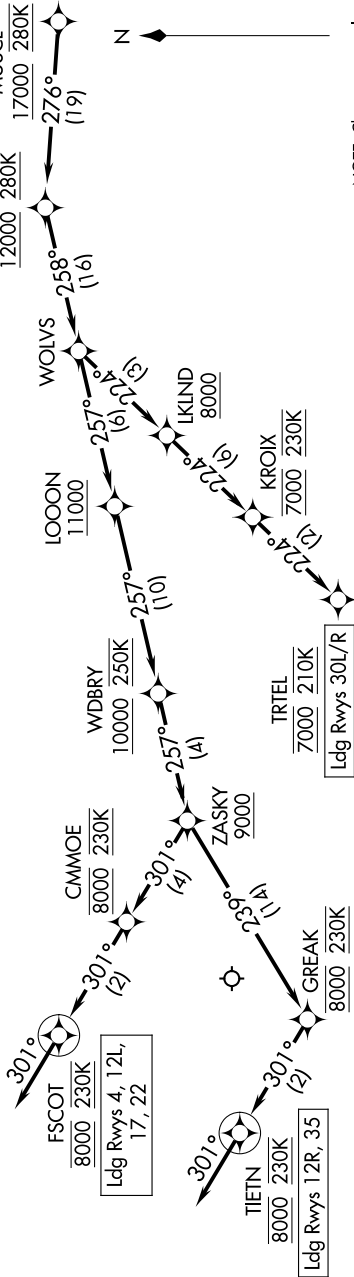


NC-1, 14 MAY 2026 to 11 JUN 2026

RNAV 1 - DME/DME/IRU or GPS.
RADAR required.

NOTE: Jet aircraft only.
NOTE: Expect "descend via" clearance and runway transition assignment by center. Approach will assign landing runway.
NOTE: Jet aircraft descend via Mach number until 280K, if unable, advise ATC.



NOTE: Chart not to scale.

ARRIVAL ROUTE DESCRIPTION

From MUSCL on track 276° to cross BAYKS at or above 12000 and at 280K, then on track 258° to WOLVS.

LANDING RUNWAYS 4, 12L, 17, 22: From WOLVS on track 257° to cross LOOON at or above 11000, then on track 257° to cross WDBRY at or above 10000 and at 250K, then on track 257° to cross ZASKY at or above 9000, then on track 301° to cross CMMOE at 8000 and at 230K, then on track 301° to cross FSCOT at 8000 and at 230K, then on track 301°. Expect RADAR vectors to final approach course.

LANDING RUNWAYS 12R, 35: From WOLVS on track 257° to cross LOOON at or above 11000, then on track 257° to cross WDBRY at or above 10000 and at 250K, then on track 257° to cross ZASKY at or above 9000, then on track 239° to cross GREAK at 8000 and at 230K, then on track 301° to cross TIETN at 8000 and at 230K, then on track 301°. Expect RADAR vectors to final approach course.

LANDING RUNWAYS 30L/R: From WOLVS on track 224° to cross LKIND at or above 8000, then on track 224° to cross KROIX at 7000 and at 230K, then on track 224° to cross TRIEL at 7000 and at 210K. Expect RNAV (RNP), RNAV (GPS), or ILS RWY 30R approach or RADAR vectors to Rwy 30L/R final approach course.

NC-1, 14 MAY 2026 to 11 JUN 2026