

PHLBO FOUR ARRIVAL (RNAV) Transition Routes

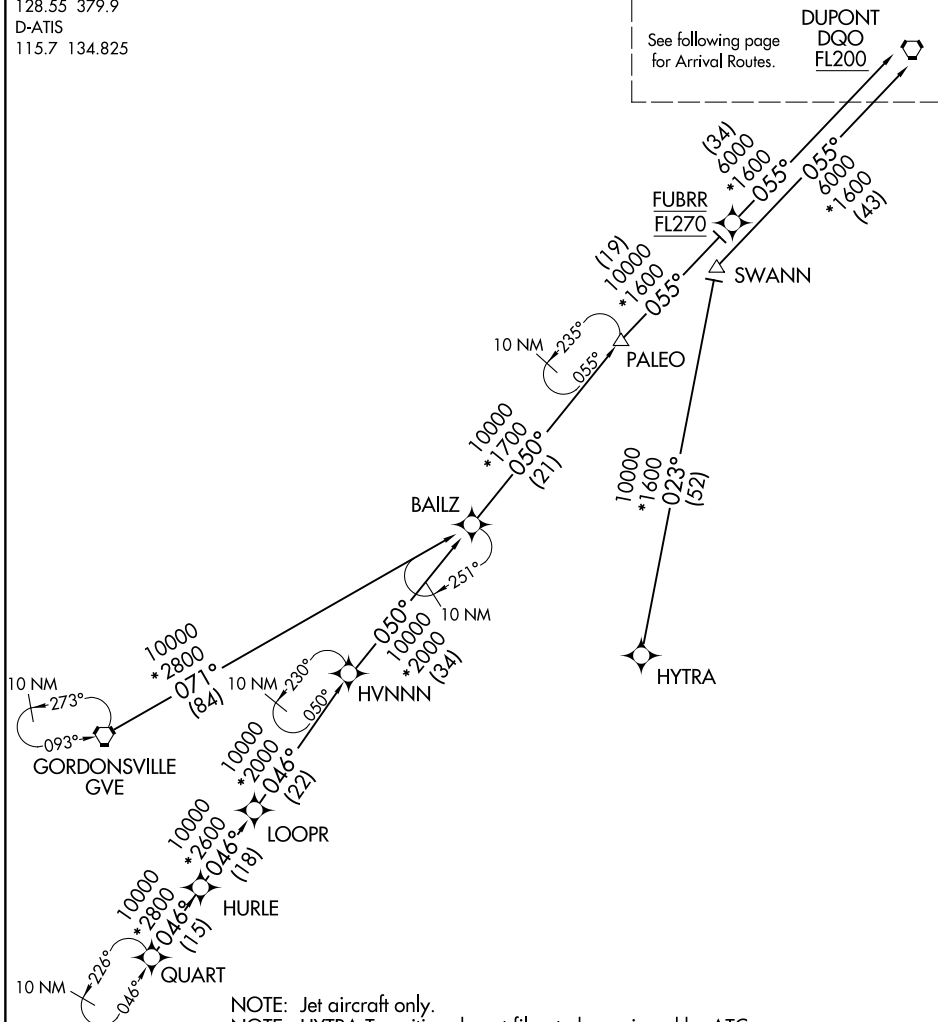
WASHINGTON CENTER
132.52 307.25
NEWARK APP CON
128.55 379.9
D-ATIS
115.7 134.825

RNAV 1 - DME/DME/IRU or GPS.

RADAR required.

See following page
for Arrival Routes.

DUPONT
DQO
FL200



NOTE: Jet aircraft only.
 NOTE: HYTRA Transition do not file - to be assigned by ATC.
 NOTE: Landing Rwy 4L/R & 29, approaching METRO expect RADAR vectors.
 NOTE: Landing Rwy 11 & 22L/R, approaching PHLBO expect RADAR vectors.

NOTE: Chart not to scale.

- GORDONSVILLE TRANSITION (GVE.PHLBO4)
- HYTRA TRANSITION (HYTRA.PHLBO4)
- QUART TRANSITION (QUART.PHLBO4)
- SWANN TRANSITION (SWANN.PHLBO4)

(CONTINUED ON FOLLOWING PAGE)

NE-2, 14 MAY 2026 to 11 JUN 2026

NE-2, 14 MAY 2026 to 11 JUN 2026

PHLBO FOUR ARRIVAL (RNAV) Transition Routes