

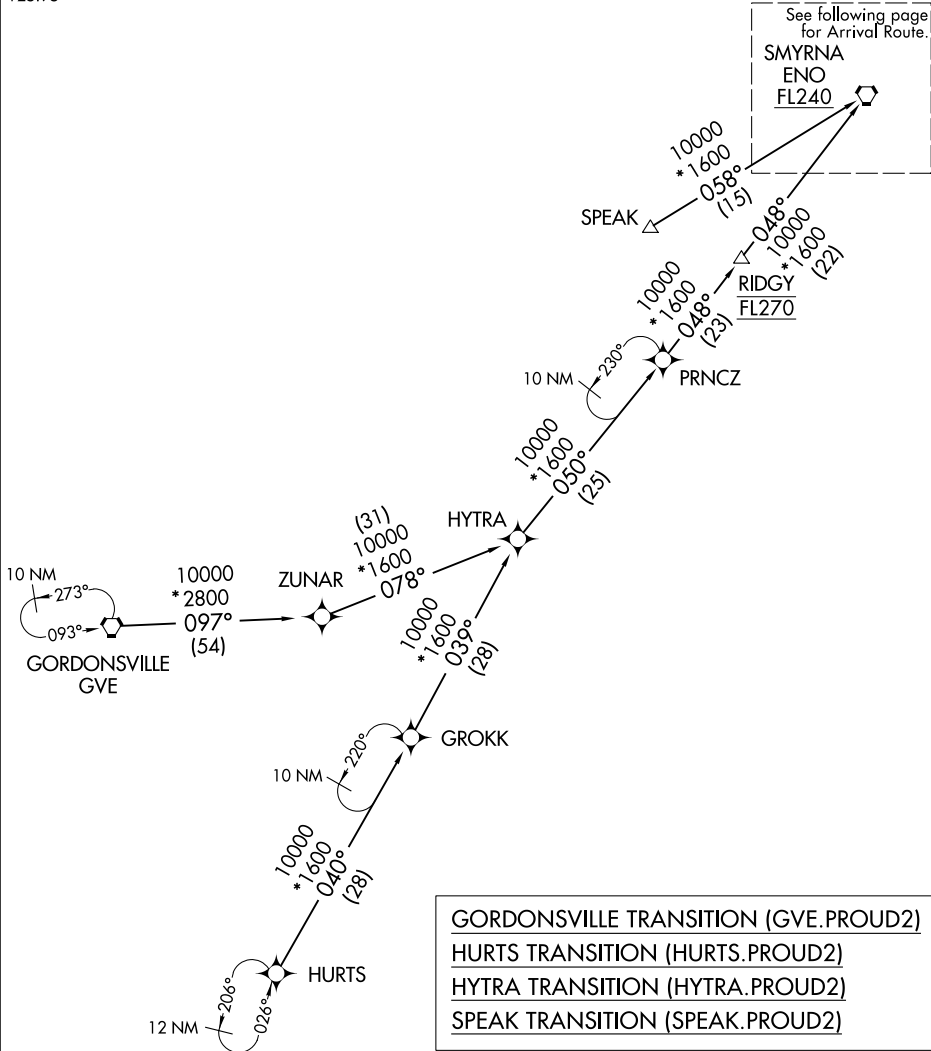
PROUD TWO ARRIVAL (RNAV) Transition Routes

NEW YORK APP CON
127.3 322.35
D-ATIS
125.95

RNAV 1 - DME/DME/IRU or GPS.

RADAR required.

See following page
for Arrival Route.
SMYRNA
ENO
FL240



NE-2, 14 MAY 2026 to 11 JUN 2026

NE-2, 14 MAY 2026 to 11 JUN 2026

NOTE: Jet aircraft only.
NOTE: SPEAK transition for Washington Metropolitan departures only.

(CONTINUED ON FOLLOWING PAGE)

NOTE: Chart not to scale.