

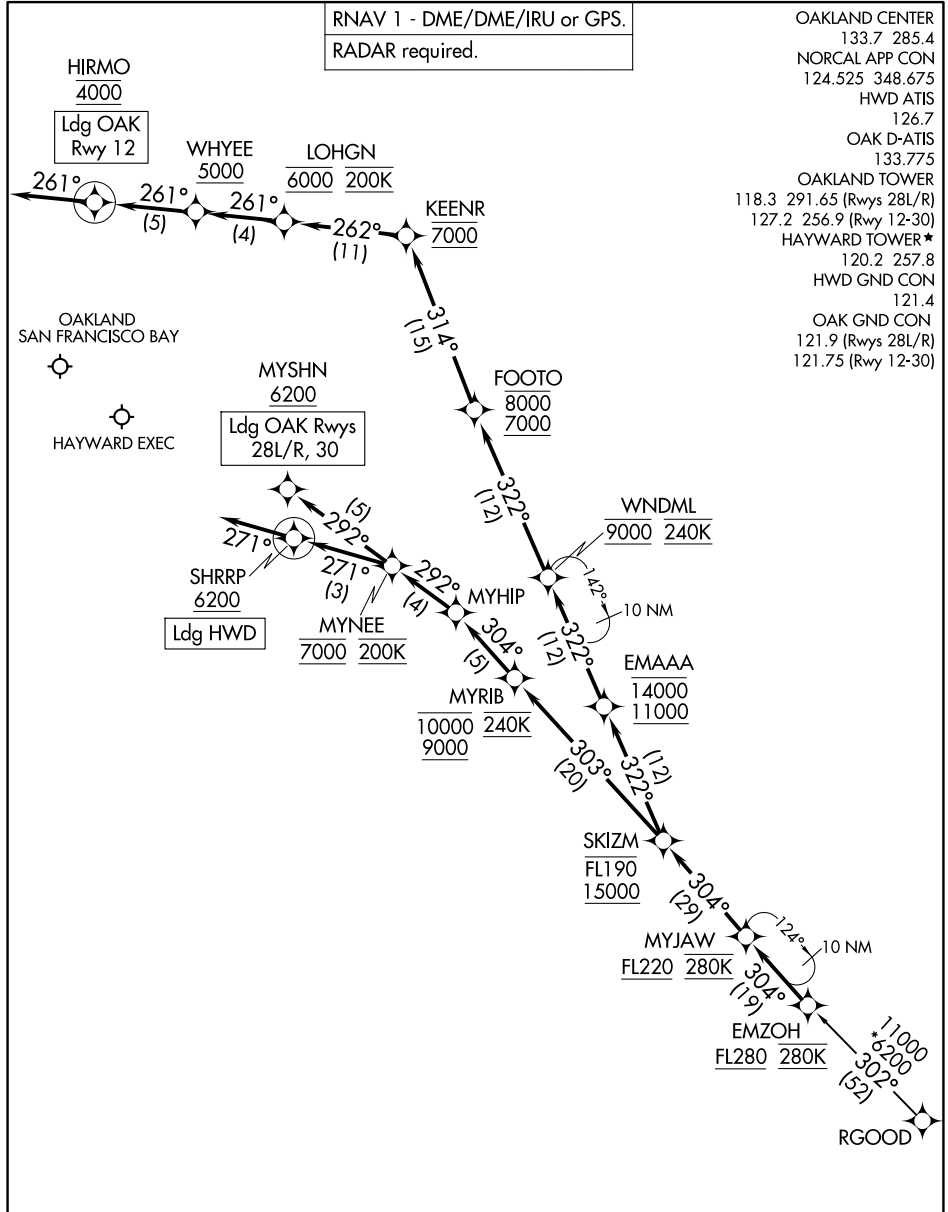
# EMZOH FOUR ARRIVAL (RNAV)

AL-294 (FAA)

OAKLAND, CALIFORNIA

RNAV 1 - DME/DME/IRU or GPS.  
RADAR required.

OAKLAND CENTER  
133.7 285.4  
NORCAL APP CON  
124.525 348.675  
HWD ATIS  
126.7  
OAK D-ATIS  
133.775  
OAKLAND TOWER  
118.3 291.65 (Rwys 28L/R)  
127.2 256.9 (Rwy 12-30)  
HAYWARD TOWER \*  
120.2 257.8  
HWD GND CON  
121.4  
OAK GND CON  
121.9 (Rwys 28L/R)  
121.75 (Rwy 12-30)



SW-2, 14 MAY 2026 to 11 JUN 2026

SW-2, 14 MAY 2026 to 11 JUN 2026

NOTE: Expect to receive "descend via" clearance from Oakland Center.  
Northern California TRACON will assign landing runway.

(CONTINUED ON FOLLOWING PAGE)

NOTE: Chart not to scale.

# EMZOH FOUR ARRIVAL (RNAV)

OAKLAND, CALIFORNIA