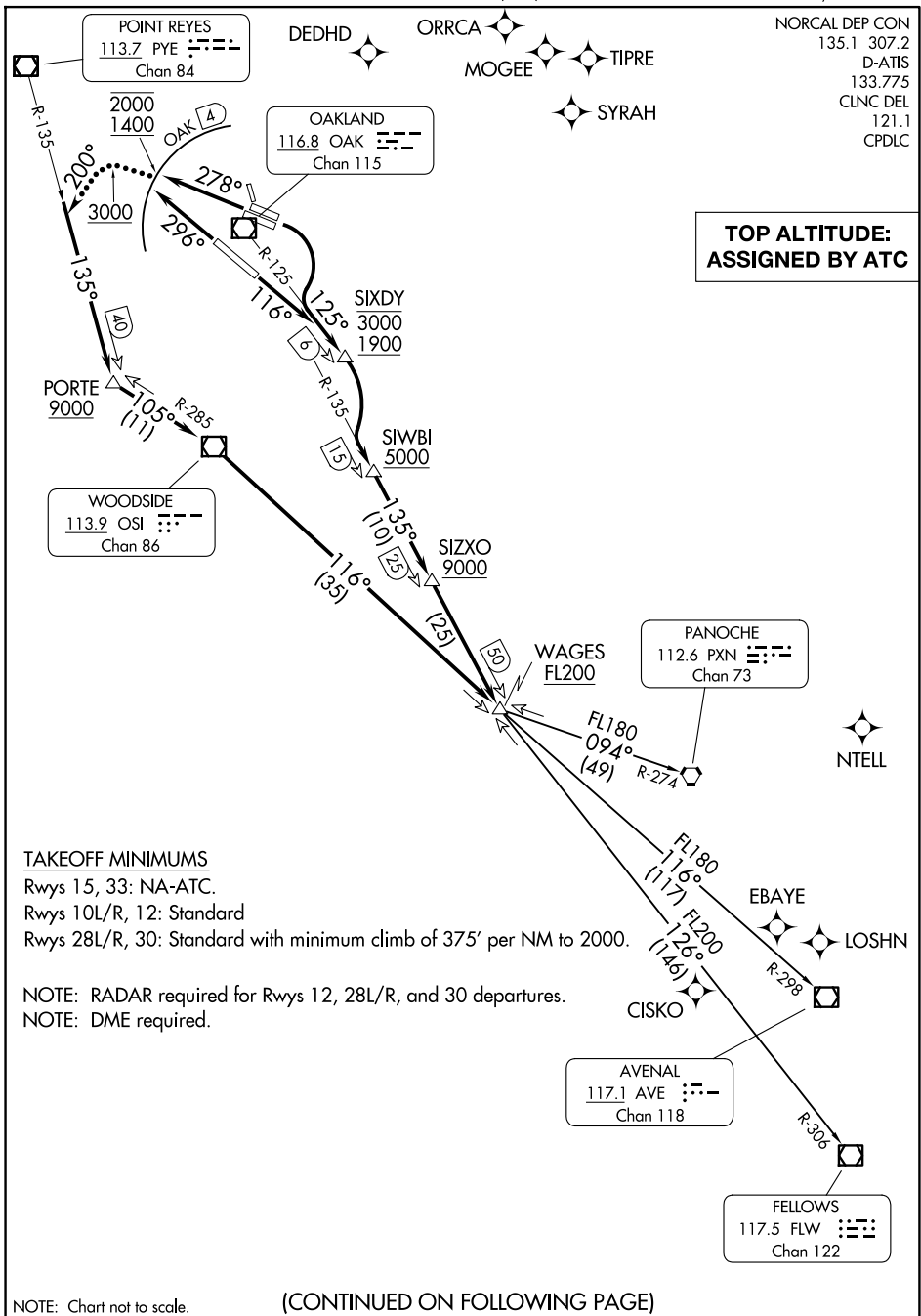


(SKYL1.WAGES) 25275
SKYLINE ONE DEPARTURE

OAKLAND SAN FRANCISCO BAY (OAK)
 OAKLAND, CALIFORNIA

AL-294 (FAA)



**TOP ALTITUDE:
 ASSIGNED BY ATC**

TAKEOFF MINIMUMS

- Rwys 15, 33: NA-ATC.
- Rwys 10L/R, 12: Standard
- Rwys 28L/R, 30: Standard with minimum climb of 375' per NM to 2000.

NOTE: RADAR required for Rwys 12, 28L/R, and 30 departures.
 NOTE: DME required.

NOTE: Chart not to scale.

(CONTINUED ON FOLLOWING PAGE)

(SKYL1.WAGES) 15AUG19
SKYLINE ONE DEPARTURE

OAKLAND, CALIFORNIA
 OAKLAND SAN FRANCISCO BAY (OAK)

SW-2, 14 MAY 2026 to 11 JUN 2026

SW-2, 14 MAY 2026 to 11 JUN 2026