

25219

PATUXENT RIVER NAS (TRAPNELL FIELD) (KNHK)

SWABY ONE (OBSTACLE) DEPARTURE (SWABY1.SWABY)

[USN]

PATUXENT RIVER, MARYLAND

ATIS 322.425
CLNC DEL 135.2 316.125
GND CON 120.6 336.4
TOWER 123.7 343.65
APP/DEP CON ★ 121.0 250.3

TACAN required

Rwy	Knots	60	120	180	240	300	360
24	V/V(fpm)	214	428	642	856	1070	1284

Minimum climb rate to 500

Departure Rwy 2-20 not authorized.
Minimum filing alt 10,000.

NAS PATUXENT RIVER
Chan 39 (Y) NHK

N38°16.86'
W76°24.64'

GORDONSVILLE
115.6 GVE

Chan 103

N38°00.82'
W78°09.18'

SWABY
N37°52.38'
W76°31.20'

9000

HOPEWELL
114.35 HPW

Chan 90 (Y)

N37°19.73'
W77°06.96'

HARCUM
108.8 HCM

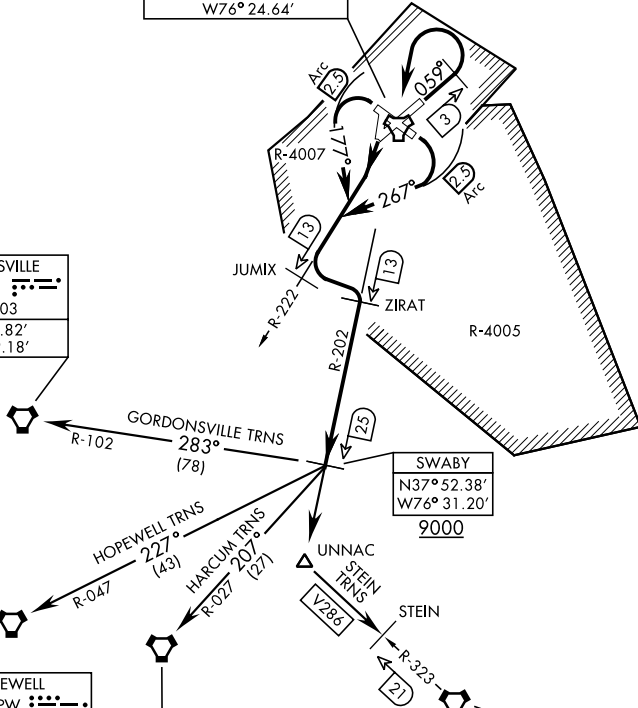
Chan 25

N37°26.92'
W76°42.68'

CAPE CHARLES
112.2 CCV

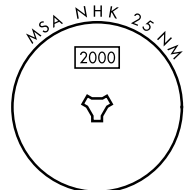
Chan 59

N37°20.85'
W75°59.86'



ATC BRIEF
REQUIRED
135.2 316.125

Note: Chart not to scale
(CONTINUED ON FOLLOWING PAGE)



SWABY ONE (OBSTACLE) DEPARTURE (SWABY1.SWABY)

PATUXENT RIVER, MARYLAND

Amdt 1 07AUG25

PATUXENT RIVER NAS (TRAPNELL FIELD) (KNHK)

NE-3, 14 MAY 2026 to 11 JUN 2026

NE-3, 14 MAY 2026 to 11 JUN 2026