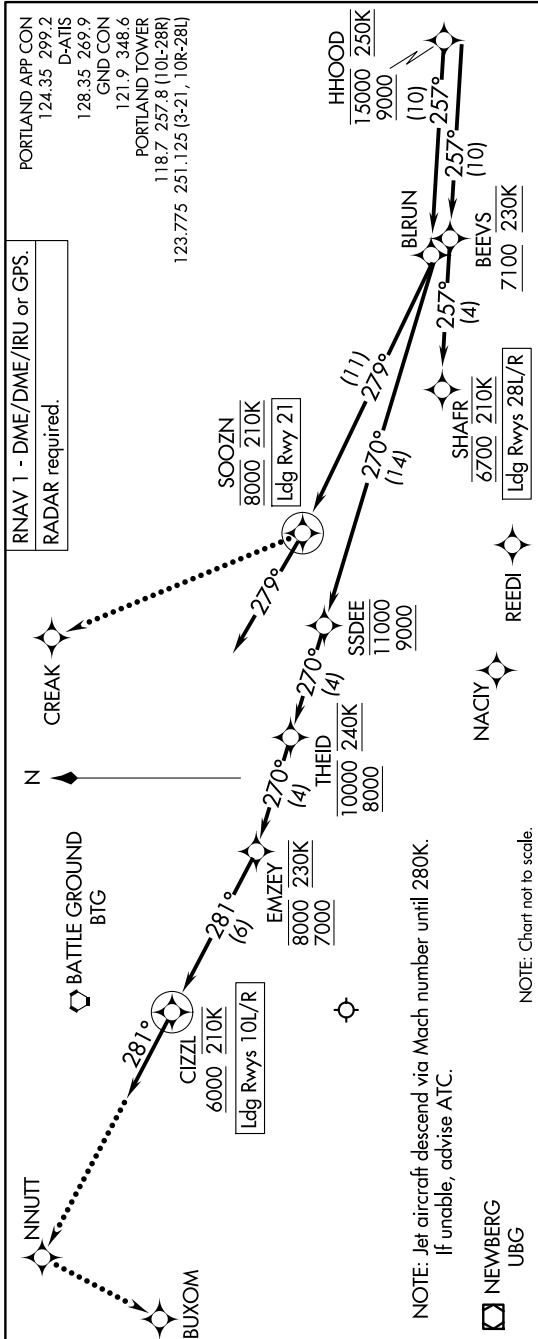


HHOOD SIX ARRIVAL (RNAV) Arrival Routes

NW-1, 14 MAY 2026 to 11 JUN 2026



ARRIVAL ROUTE DESCRIPTION

LANDING RUNWAYS 10L/R: From HHOOD on track 257° to BURUN, then on track 270° to cross SSDEE between 9000 and 11000, then on track 270° to cross THEID between 8000 and 10000 and at 240K, then on track 270° to cross EMZEY between 7000 and 8000 and at 230K, then on track 281° to cross CIZZL at or above 6000 and at 210K, then on track 281°. Expect RNP Rwy 10L/R approach or RADAR vectors to final approach course.

LANDING RUNWAY 21: From HHOOD on track 257° to BURUN, then on track 279° to cross SOOZN at 8000 and at 210K, then on track 279°. Expect RADAR vectors to final approach course.

LANDING RUNWAYS 28L/R: From HHOOD on track 257° to cross BEEVS at or above 7100 and at 230K, then on track 257° to cross SHAFR at 6700 and at 210K. Expect RNAV or ILS RWY 28L/R approach.

LOST COMMUNICATIONS

Follow published crossing altitudes and then maintain lowest Rwy transition altitude until established on approach procedure.

RUNWAYS 10L/R: After CIZZL proceed to NNUTT, then turn left to BUXOM and proceed on the ILS RWY 10L approach.

RUNWAY 21: After SOOZN turn right to CREAK and proceed on the LOC/DME RWY 21 approach.

RUNWAYS 28L/R: After SHAFR proceed on the ILS or LOC RWY 28R approach.

NW-1, 14 MAY 2026 to 11 JUN 2026