

# TMBRS FOUR ARRIVAL (RNAV) Transition Routes

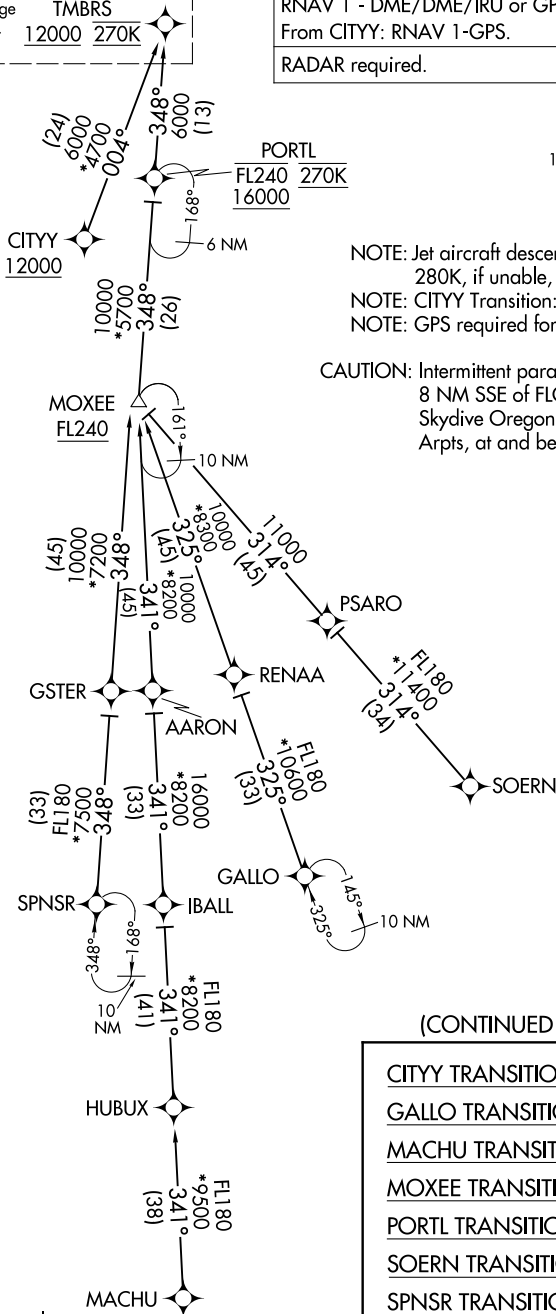
AL-330 (FAA)

See following page  
for arrival routes.

TMBRS  
12000 270K

RNAV 1 - DME/DME/IRU or GPS.  
From CITYY: RNAV 1-GPS.  
RADAR required.

PORTLAND APP CON  
124.35 299.2  
D-ATIS  
128.35 269.9  
GND CON  
121.9 348.6  
PORTLAND TOWER  
118.7 257.8 (10L-28R)  
123.775 251.125 (3-21, 10R-28L)



NOTE: Jet aircraft descend via Mach number until 280K, if unable, advise ATC.  
NOTE: CITYY Transition: ATC assigned only.  
NOTE: GPS required for CITYY Transition.

CAUTION: Intermittent parachuting activity within 8 NM SSE of FLOWR in the vicinity of Skydive Oregon (LØ5) and Mulino (459) Arpts, at and below 17500.

EUGENE  
EUG

(CONTINUED ON FOLLOWING PAGE)

- CITYY TRANSITION (CITYY.TMBRS4)
- GALLO TRANSITION (GALLO.TMBRS4)
- MACHU TRANSITION (MACHU.TMBRS4)
- MOXEE TRANSITION (MOXEE.TMBRS4)
- PORTL TRANSITION (PORTL.TMBRS4)
- SOERN TRANSITION (SOERN.TMBRS4)
- SPNSR TRANSITION (SPNSR.TMBRS4)

NOTE: Chart not to scale.

# TMBRS FOUR ARRIVAL (RNAV) Transition Routes