

(TMBRS.TMBRS4) 26078

# TMBRS FOUR ARRIVAL (RNAV) Arrival Routes

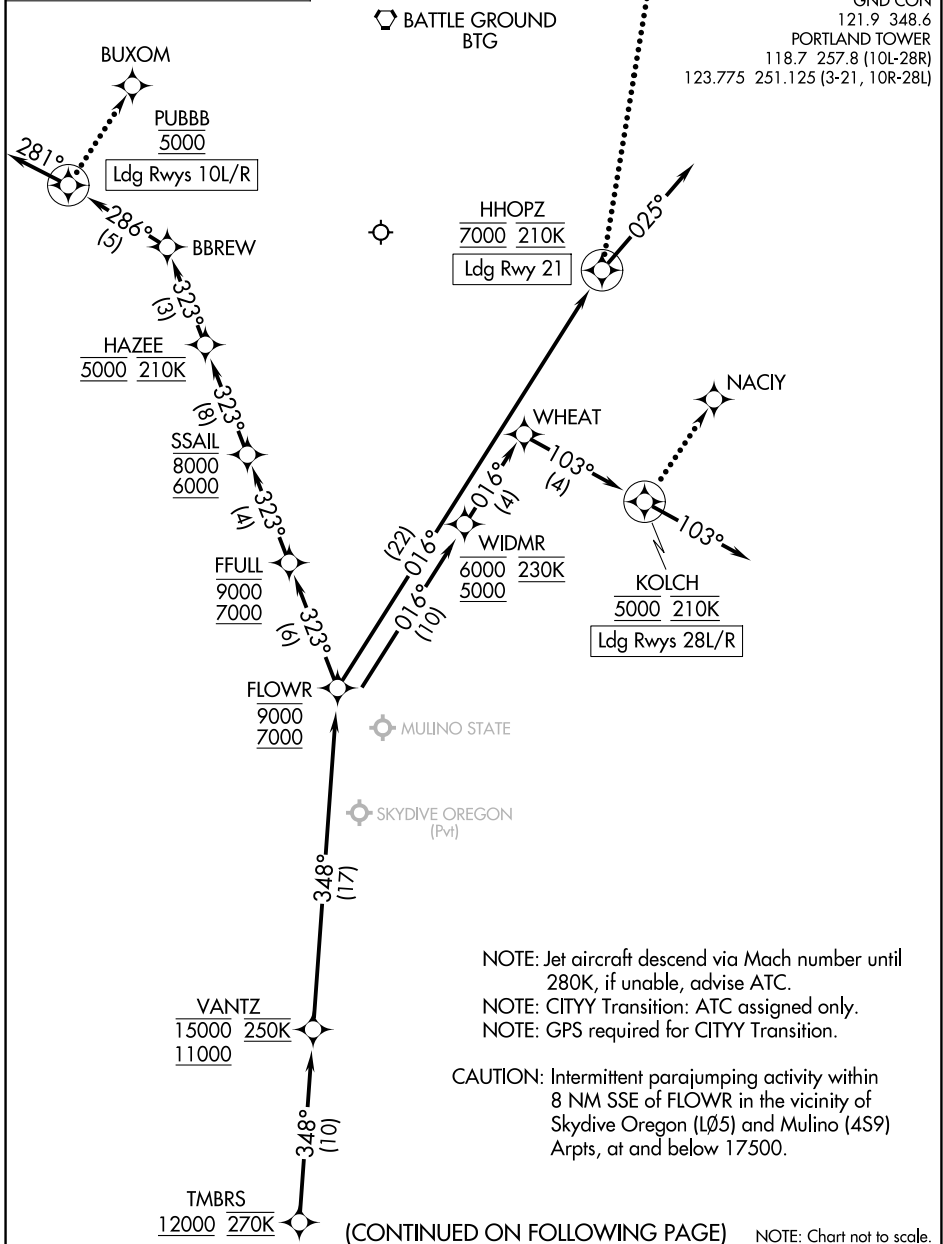
AL-330 (FAA)

PORTLAND INTL (PDX)  
PORTLAND, OREGON

RNAV 1 - DME/DME/IRU or GPS.  
From CITYY: RNAV 1-GPS.

RADAR required.

PORTLAND APP CON  
124.35 299.2  
D-ATIS  
128.35 269.9  
GND CON  
121.9 348.6  
PORTLAND TOWER  
118.7 257.8 (10L-28R)  
123.775 251.125 (3-21, 10R-28L)



NW-1, 14 MAY 2026 to 11 JUN 2026

NW-1, 14 MAY 2026 to 11 JUN 2026

NOTE: Jet aircraft descend via Mach number until 280K, if unable, advise ATC.  
NOTE: CITYY Transition: ATC assigned only.  
NOTE: GPS required for CITYY Transition.

CAUTION: Intermittent parajumping activity within 8 NM SSE of FLOWR in the vicinity of Skydive Oregon (LØ5) and Mulino (459) Arpts, at and below 17500.

(CONTINUED ON FOLLOWING PAGE) NOTE: Chart not to scale.

# TMBRS FOUR ARRIVAL (RNAV) Arrival Routes

(TMBRS.TMBRS4) 19MAR26

PORTLAND, OREGON  
PORTLAND INTL (PDX)