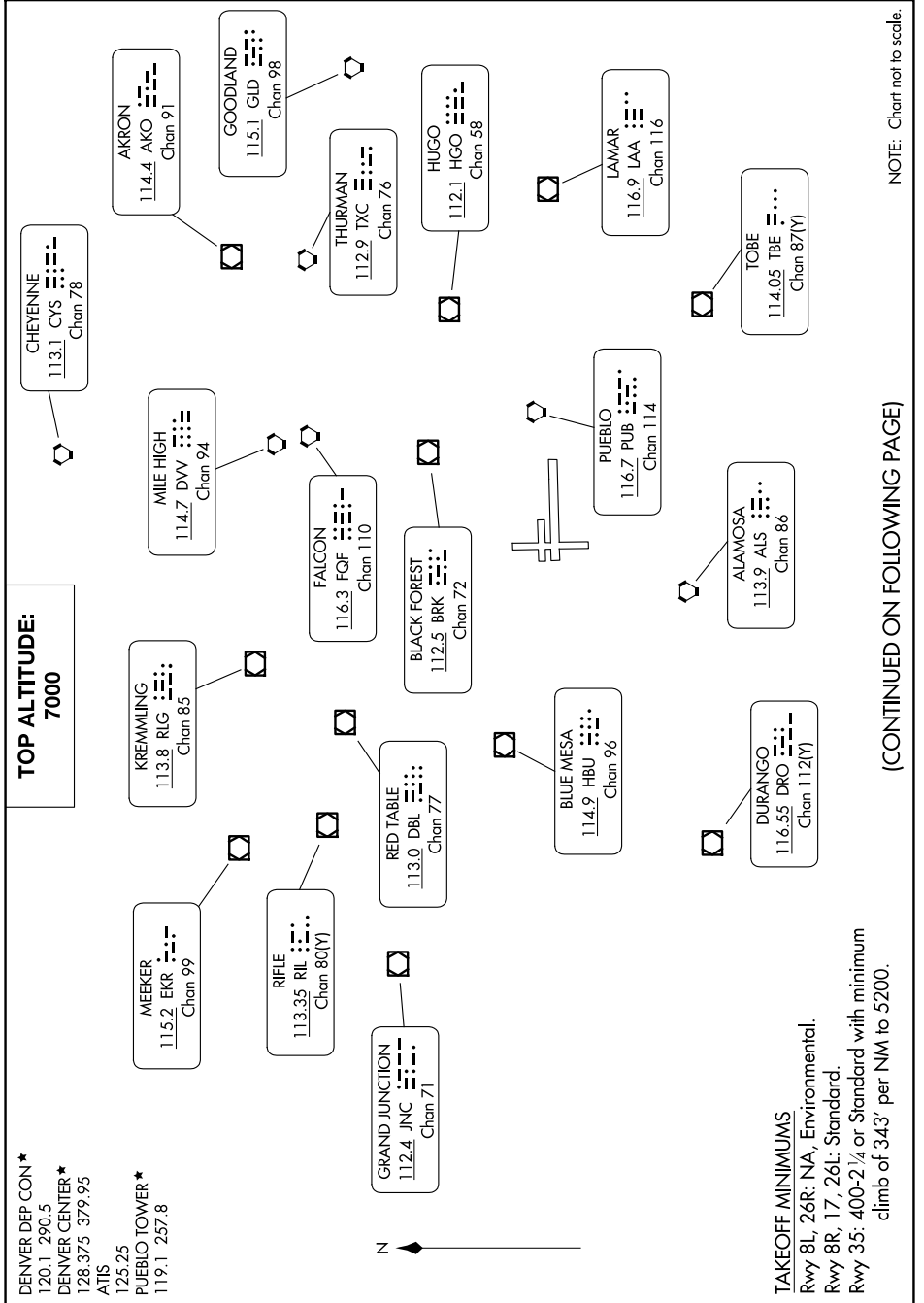


# CANYON FOUR DEPARTURE

AL-334 (FAA)

PUEBLO MEML (PUB)  
PUEBLO, COLORADO

SW-1, 14 MAY 2026 to 11 JUN 2026



(CONTINUED ON FOLLOWING PAGE)

SW-1, 14 MAY 2026 to 11 JUN 2026

**TAKEOFF MINIMUMS**  
 Rwy 8L, 26R: NA, Environmental.  
 Rwy 8R, 17, 26L: Standard.  
 Rwy 35: 400-2 1/4 or Standard with minimum  
 climb of 343' per NM to 5200.