

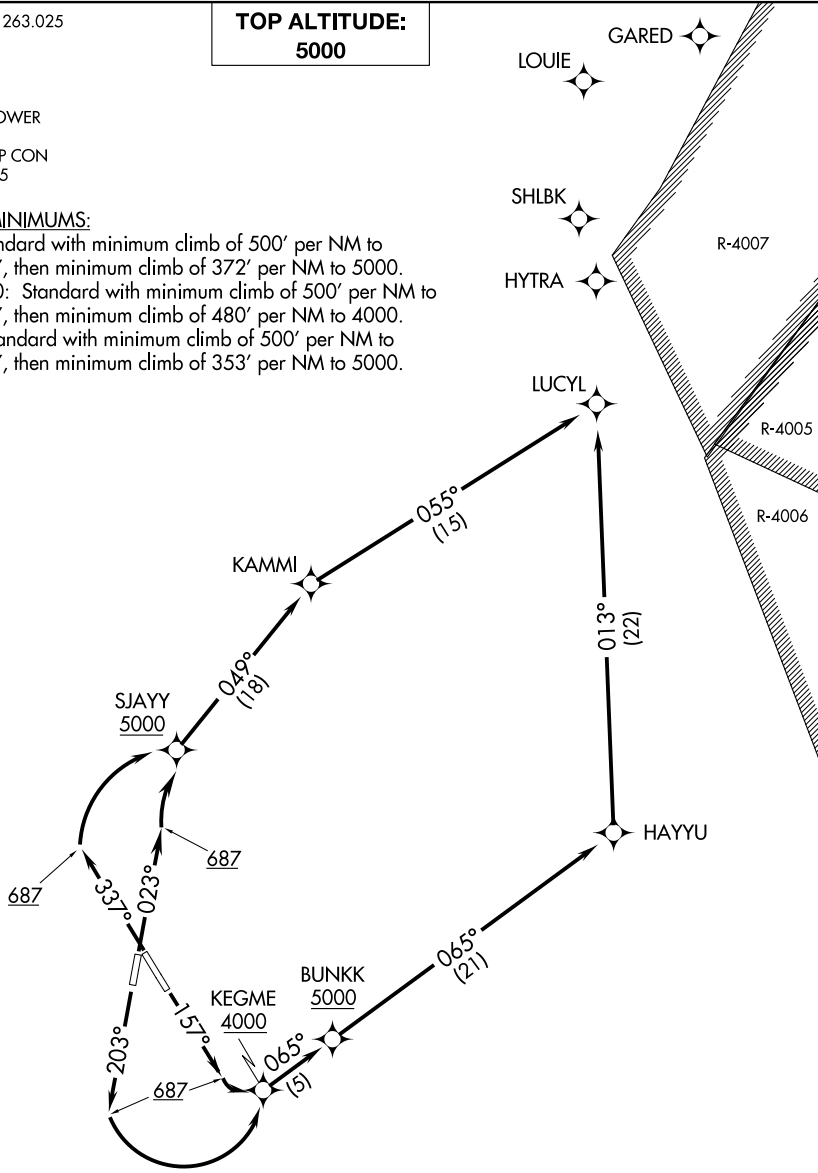
LUCYL SIX DEPARTURE (RNAV)

ATIS 119.15 263.025
CLNC DEL
127.55 348.6
GND CON
121.9 348.6
RICHMOND TOWER
121.1 257.8
POTOMAC DEP CON
126.4 282.375

**TOP ALTITUDE:
5000**

TAKEOFF MINIMUMS:

Rwy 2: Standard with minimum climb of 500' per NM to 687, then minimum climb of 372' per NM to 5000.
Rwys 16, 20: Standard with minimum climb of 500' per NM to 687, then minimum climb of 480' per NM to 4000.
Rwy 34: Standard with minimum climb of 500' per NM to 687, then minimum climb of 353' per NM to 5000.



NOTE: RNAV 1.
NOTE: DME/DME/IRU or GPS required.
NOTE: RADAR required for non-GPS equipped aircraft.

(NARRATIVE ON FOLLOWING PAGE)

NOTE: Chart not to scale.

NE-3, 14 MAY 2026 to 11 JUN 2026

NE-3, 14 MAY 2026 to 11 JUN 2026