

# PITTT TWO ARRIVAL (RNAV) Transition Routes

AL-365 (FAA)

SALT LAKE CITY INTL (SLC)  
SALT LAKE CITY, UTAH

SW-4, 14 MAY 2026 to 11 JUN 2026

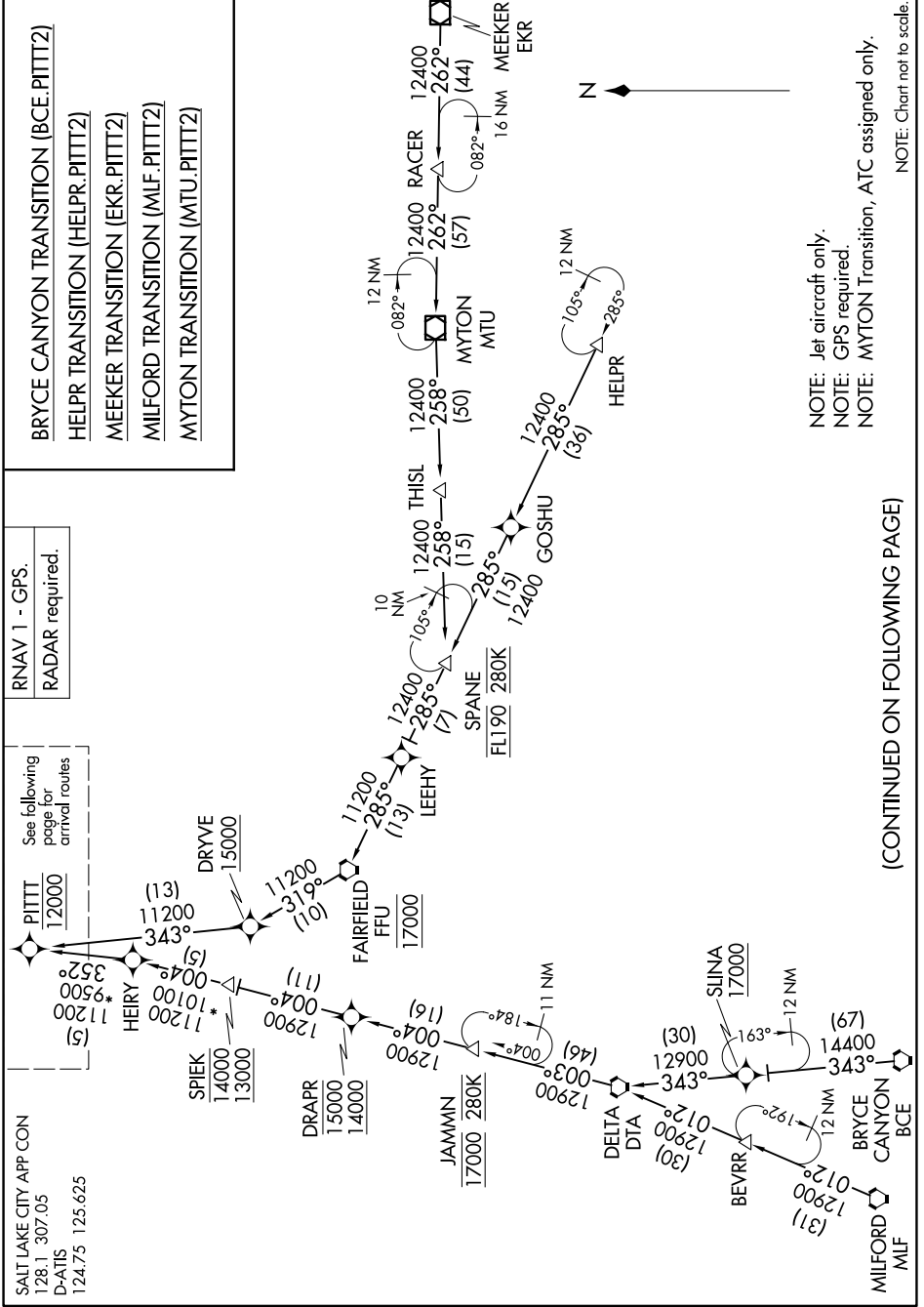
- BRYCE CANYON TRANSITION (BCE.PITTT2)
- HELPR TRANSITION (HELPR.PITTT2)
- MEEKER TRANSITION (EKR.PITTT2)
- MILFORD TRANSITION (MLF.PITTT2)
- MYTON TRANSITION (MTU.PITTT2)

RNAV 1 - GPS.  
RADAR required.

See following page for arrival routes

PITTT 12000  
HEIRY 11200  
SPIEK 14000  
DRAPR 15000  
JAMMIN 17000  
DELTA 12900  
BEVRR 12900  
MILFORD 12900  
BRYCE CANYON 14400  
SLINA 17000

SALT LAKE CITY APP CON  
128.1 307.05  
D-ATIS  
124.75 125.625



NOTE: Jet aircraft only.  
NOTE: GPS required.  
NOTE: MYTON Transition, ATC assigned only.

NOTE: Chart not to scale.

(CONTINUED ON FOLLOWING PAGE)

SW-4, 14 MAY 2026 to 11 JUN 2026

# PITTT TWO ARRIVAL (RNAV) Transition Routes

SALT LAKE CITY, UTAH  
SALT LAKE CITY INTL (SLC)