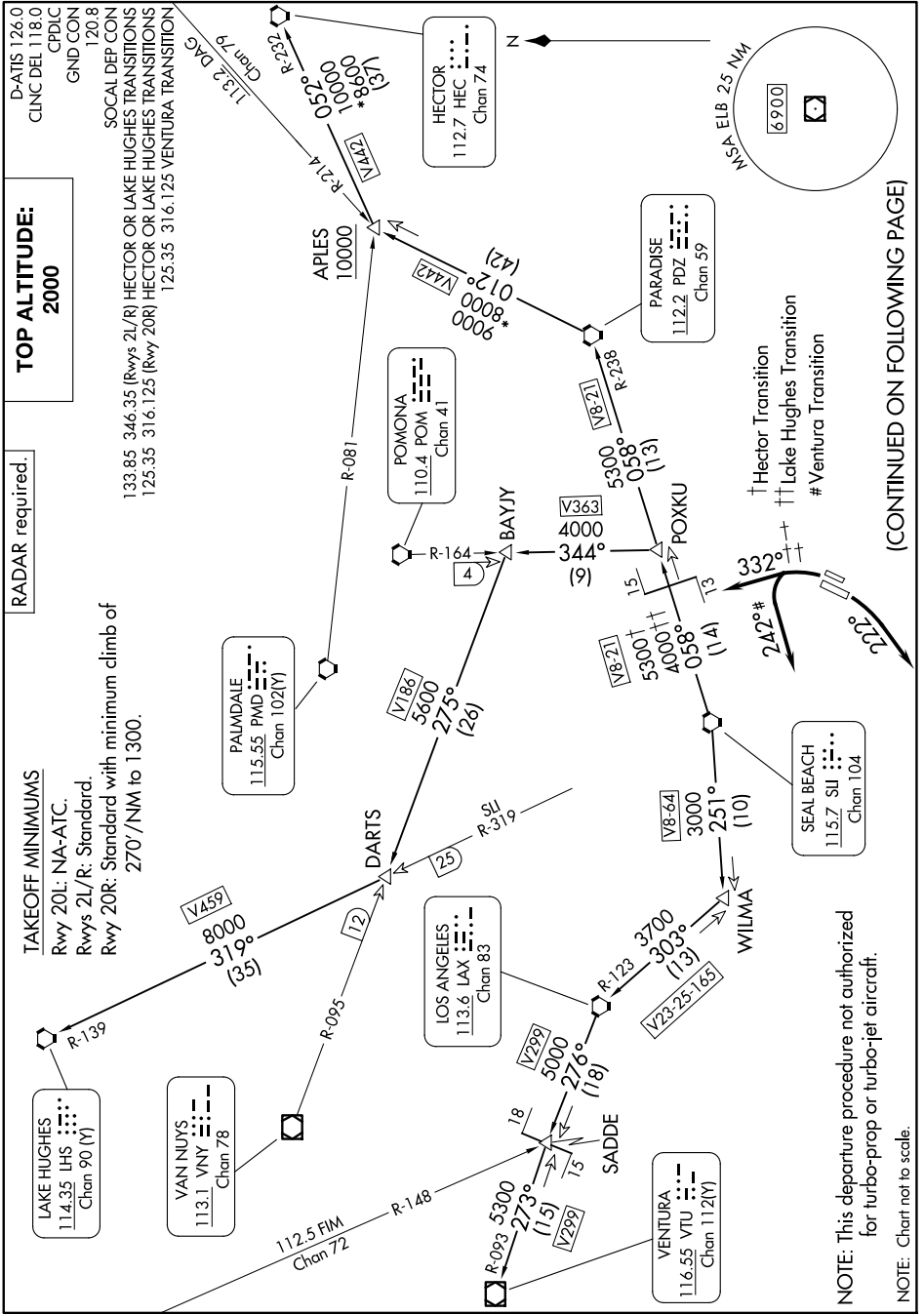


ANAHEIM TWO DEPARTURE

JOHN WAYNE/ORANGE COUNTY (SNA)
SANTA ANA, CALIFORNIA

AL-377 (FAA)

SW-3, 14 MAY 2026 to 11 JUN 2026



TOP ALTITUDE:
2000

RADAR required.

TAKEOFF MINIMUMS
 Rwy 20L: NA-ATC.
 Rwys 2L/R: Standard.
 Rwy 20R: Standard with minimum climb of 270'/NM to 1300.

SOCAL DEP CON
 GND CON
 120.8
 133.85 346.35 (Rwys 2L/R) HECTOR OR LAKE HUGHES TRANSITIONS
 125.35 316.125 (Rwy 20R) HECTOR OR LAKE HUGHES TRANSITIONS
 125.35 316.125 VENTURA TRANSITION

(CONTINUED ON FOLLOWING PAGE)

SW-3, 14 MAY 2026 to 11 JUN 2026

ANAHEIM TWO DEPARTURE

JOHN WAYNE/ORANGE COUNTY (SNA)
SANTA ANA, CALIFORNIA

NOTE: This departure procedure not authorized for turbo-prop or turbo-jet aircraft.

NOTE: Chart not to scale.