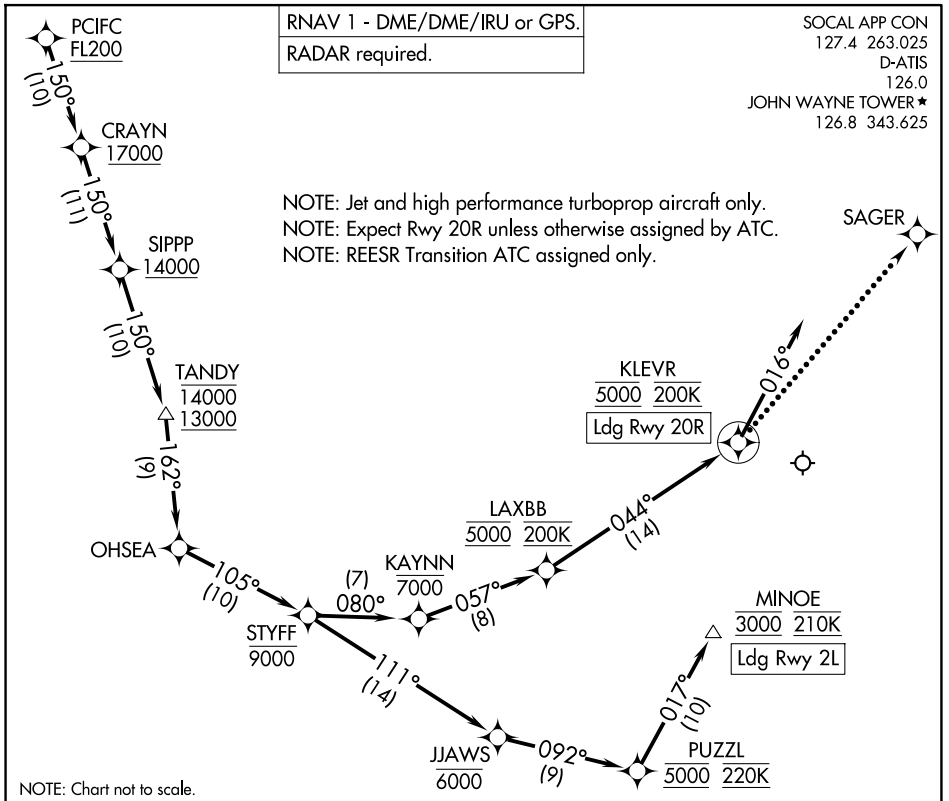


OHSEA THREE ARRIVAL (RNAV) Arrival Routes

SANTA ANA, CALIFORNIA



SW-3, 14 MAY 2026 to 11 JUN 2026

SW-3, 14 MAY 2026 to 11 JUN 2026

ARRIVAL ROUTE DESCRIPTION

From PCIFC on track 150° to cross CRAYN at or above 17000, then on track 150° to cross SIPP at or above 14000, then on track 150° to cross TANDY between 13000 and 14000, then on track 162° to OHSEA.

LANDING RUNWAY 2L: From OHSEA on track 105° to cross STYFF at or below 9000, then on track 111° to cross JAWWS at or below 6000, then on track 092° to cross PUZZL at 5000 and at 220K, then on track 017° to cross MINOE at 3000 and at 210K. Expect RNAV (RNP) Z RWY 2L or RADAR vectors to final approach course.

LANDING RUNWAY 20R: From OHSEA on track 105° to cross STYFF at or below 9000, then on track 080° to cross KAYNN at or below 7000, then on track 057° to cross LAXBB at 5000 and at 200K, then on track 044° to cross KLEVR at 5000 and at 200K, then on track 016°. Expect RNAV (RNP) Z RWY 20R or RADAR vectors to final approach course.

LOST COMMUNICATIONS

LANDING RUNWAY 20R: After KLEVR execute RNAV (RNP) Z RWY 20R approach or proceed to SAGER and execute the ILS or LOC RWY 20R approach.

LANDING RUNWAY 2L: Proceed on LOC BC RWY 2L, RNAV (GPS) Y RWY 2L, or RNAV (RNP) Z RWY 2L.