

SAVANNAH, GEORGIA

COPTER VOR RWY 10

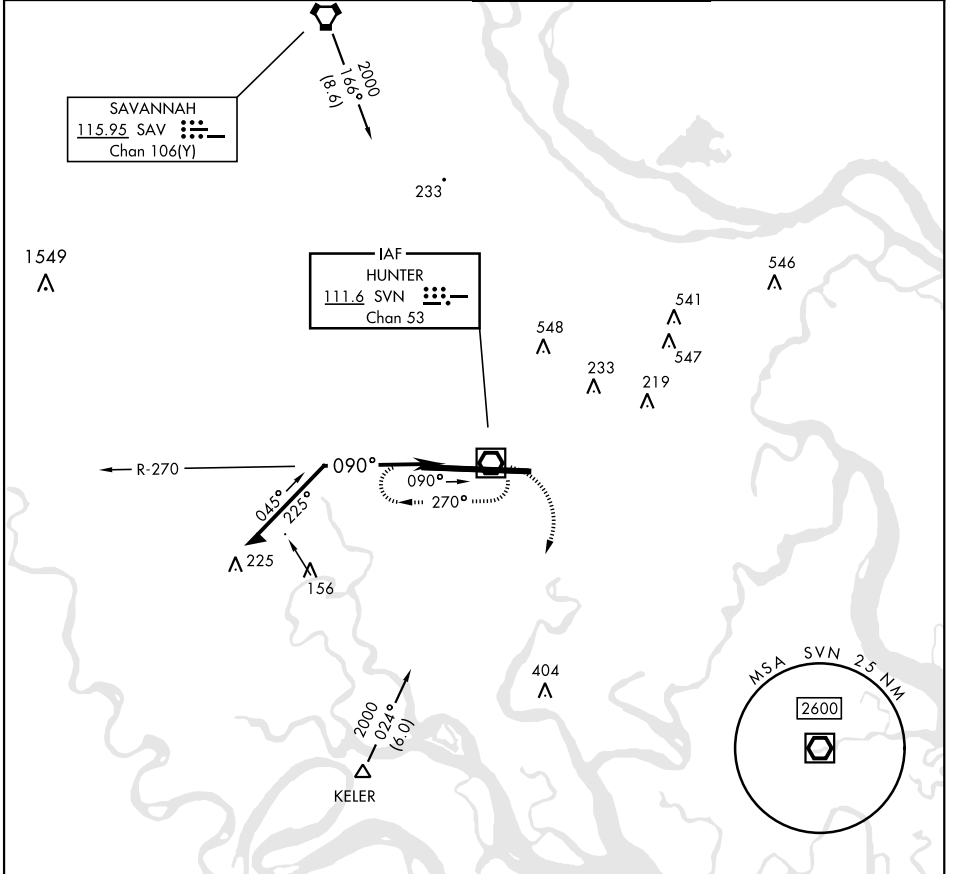
SVN VOR/DME 111.6 Chan 53	APCH CRS 090°	Rwy Idg 11,393 THRE 17 Arprt Elev 41
---	-------------------------	---

[USA]

HUNTER AAF (KSVN)

MISSED APPROACH: Climbing right turn to 1300 via SVN VOR/DME R-195, then climbing right turn to 2000 direct SVN and hold.

ATIS ★ 127.525 323.125	SAVANNAH APP CON ★ 120.4 353.775	TOWER ★ 124.975 (CTAF) 279.575	GND CON ★ 121.8 291.675
----------------------------------	--	--	-----------------------------------



Remain within 5 NM	SVN VOR/DME	1300	2000	SVN	ELEV 41	THRE 17
		SVN R-195				184
					090°	
					TWR 97	182
					11,393 x 195	182
					111	28
CATEGORY	COPTER					
S-10	540-½	523	(500-½)			
				REIL Rwy 10		
				HIRL Rwy 10-28		

SAVANNAH, GEORGIA

32°01'N-81°09'W

HUNTER AAF (KSVN)

Orig A 20OCT11

COPTER VOR RWY 10

SE-4, 14 MAY 2026 to 11 JUN 2026

SE-4, 14 MAY 2026 to 11 JUN 2026