

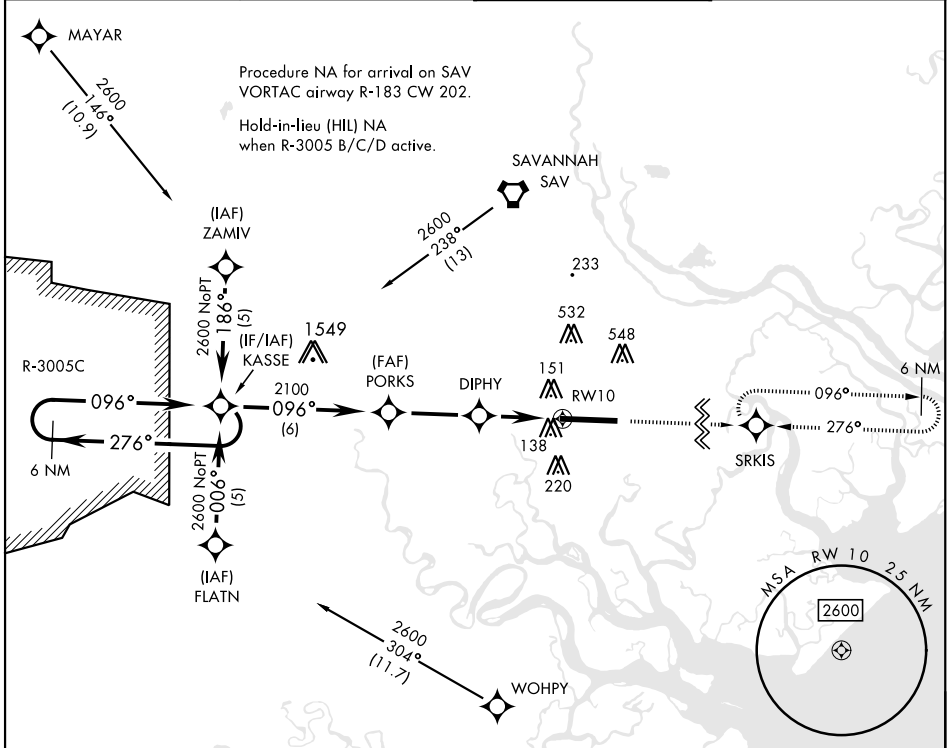
# RNAV (GPS) RWY 10

APCH CRS	Rwy ldg	11.393
096°	TDZE	26
	Arprt Elev	41

[USA]

HUNTER AAF (KSVN)

RNP APCH-GPS		MISSED APPROACH: Climb to 2500 direct SRKIS and hold.	
RADAR required when R-3005 B/C/D active.			
*When ALS inop, increase CAT AB vis to 1 mile; CAT CD vis to 1¼ miles. **Circling not authorized N of Rwy 10-28 for CAT D.			
ATIS★	SAVANNAH APP CON★	TOWER★	GND CON★
127.525 323.125	120.4 353.775	124.975 (CTAF) 0 279.575	121.8 291.675



2500		SRKIS		
ELEV 41		TDZE 26		
CATEGORY	A	B	C	D
LNAV MDA*	460-1	434	(500-1)	
CIRCLING**	600-1	559 (600-1)	920-2½ 879 (900-2½)	920-2¾ 879 (900-2¾)

# RNAV (GPS) RWY 10

SE-4, 14 MAY 2026 to 11 JUN 2026

SE-4, 14 MAY 2026 to 11 JUN 2026