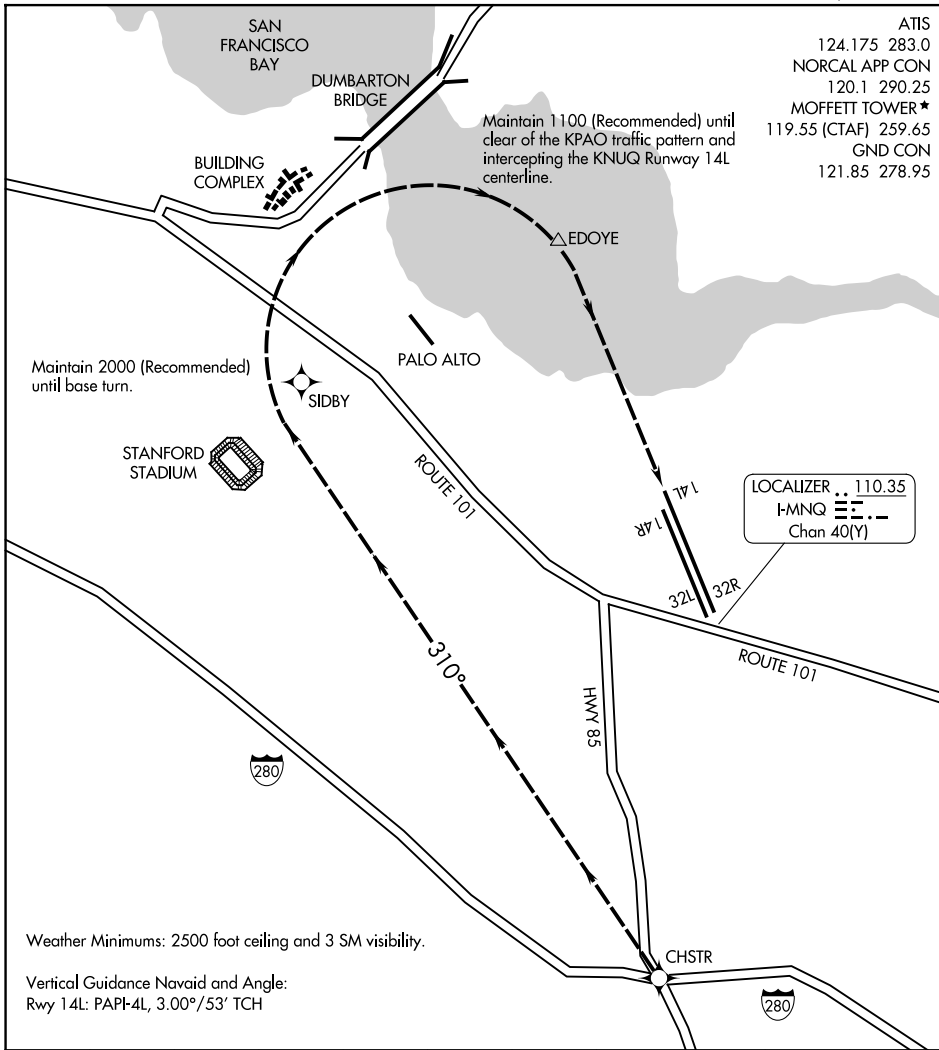


# DUMBARTON VISUAL RWY 14L

MOFFETT FEDERAL AIRFIELD (NTUQ)  
MOUNTAIN VIEW, CALIFORNIA



ATIS  
124.175 283.0  
NORCAL APP CON  
120.1 290.25  
MOFFETT TOWER \*  
119.55 (CTAF) 259.65  
GND CON  
121.85 278.95

SW-2, 14 MAY 2026 to 11 JUN 2026

SW-2, 14 MAY 2026 to 11 JUN 2026

1 NM	2	3	4	5	6	7	8	9	10
------	---	---	---	---	---	---	---	---	----

## DUMBARTON VISUAL RWY 14L

PROCEDURE NOT AUTHORIZED AT NIGHT

From south of KNUQ depart the highway 85/I-280 interchange heading 310°, remain 2 NM west of the KPAO runways and 1/2 NM east of Stanford Stadium. On an extended west downwind, turn base at 2000 (recommended) after passing Stanford Stadium but prior to the Dumbarton Bridge. Remain south and east of the Dumbarton Bridge, maintain 1100 (recommended) until clear of the KPAO traffic pattern and intercepting the KNUQ Runway 14L centerline.

# DUMBARTON VISUAL RWY 14L

MOUNTAIN VIEW, CALIFORNIA  
MOFFETT FEDERAL AIRFIELD (NTUQ)