

WAAS CH 53343 W32B	APP CRS 322°	Rwy Ldg TDZE Apt Elev	9006 31 37
--	------------------------	-----------------------------	---------------------------------------

RNAV (GPS) RWY 32R

MOFFETT FEDERAL AIRFIELD (NUQ)

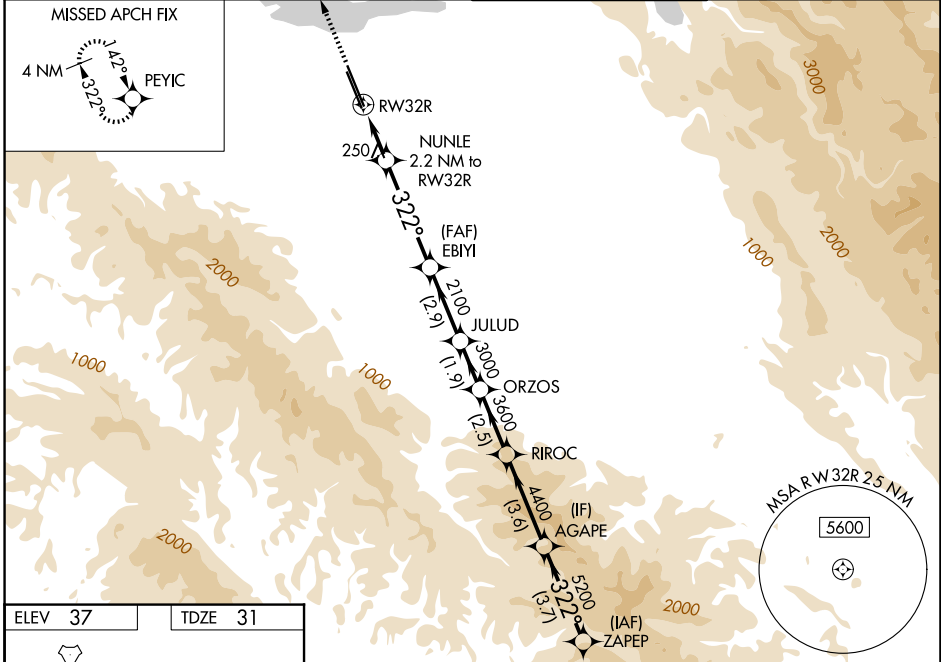
RNP APCH - GPS.

⚠ For uncompensated Baro-VNAV systems, LNAV/VNAV NA below -15°C or above 54°C. Rwy 32R helicopter visibility reduction below 3/4 SM NA.
⚠ For inop ALS increase LPV all Cats visibility to 1 1/4 SM, LNAV/VNAV all Cats visibility to 1 3/8 SM and LNAV Cats A/B to 1 SM and Cats C/D visibility to 1 3/8 SM.

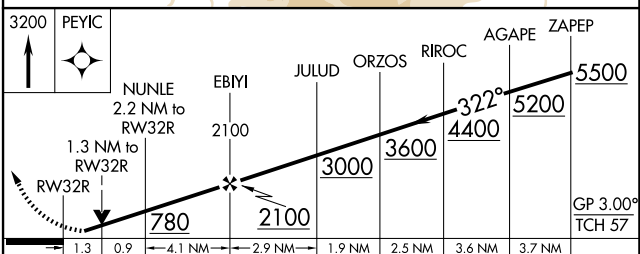
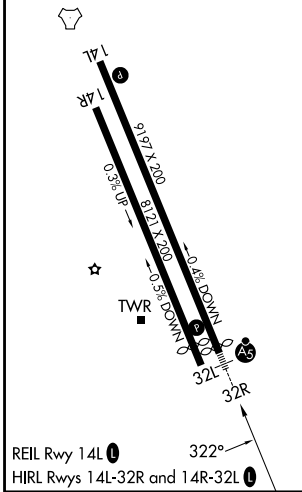


MISSED APPROACH: Climb to 3200 direct PEYIC and hold.

ATIS 124.175 283.0	NORCAL APP CON 120.1 290.25	MOFFETT TOWER* 119.55 (CTAF) 0 259.65	GND CON 121.85 278.95
------------------------------	---------------------------------------	---	---------------------------------



ELEV 37	TDZE 31
---------	---------



CATEGORY	A	B	C	D
LPV DA		452-3/4	421 (500-3/4)	
LNAV/VNAV DA		493-1	462 (500-1)	
LNAV MDA	500-3/4	469 (500-3/4)	500-1	469 (500-1)
CIRCLING	540-1 503 (600-1)	600-1 563 (600-1)	620-1 1/2 583 (600-1 1/2)	780-2 1/2 743 (800-2 1/2)

SW-2, 14 MAY 2026 to 11 JUN 2026

SW-2, 14 MAY 2026 to 11 JUN 2026