

TACAN NUQ Chan 123 (117.6)	APP CRS 321°	Rwy Ldg TDZE Apt Elev	7521 36 37
--	------------------------	-----------------------------	---------------------------------------

TACAN RWY 32L

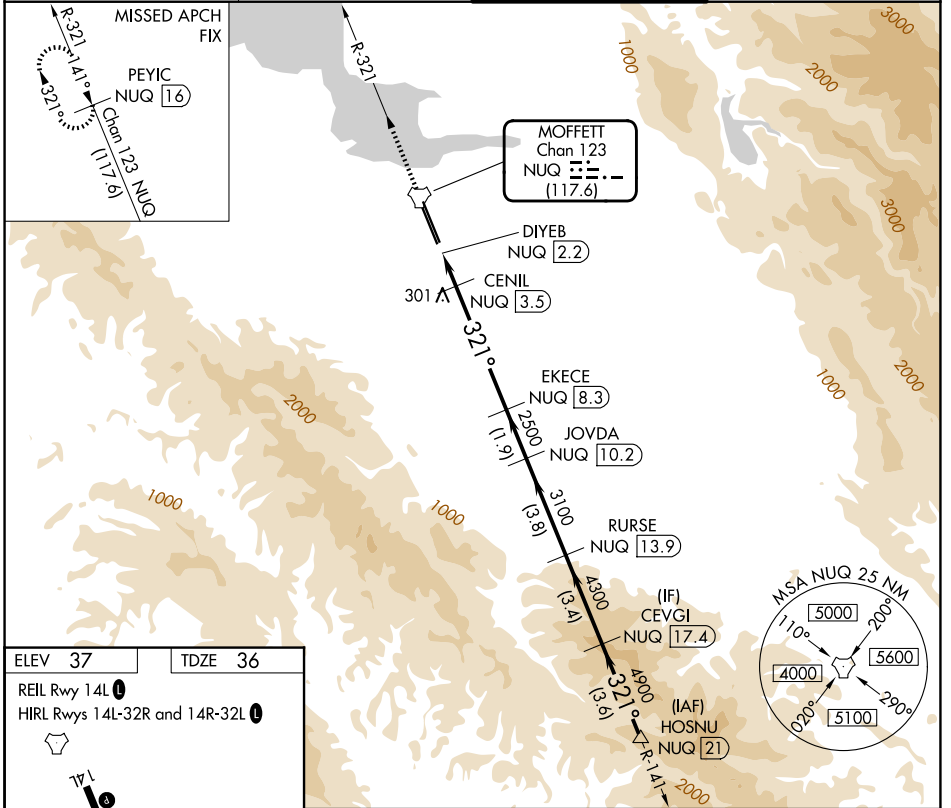
MOFFETT FEDERAL AIRFIELD (NUQ)

RADAR required for procedure entry.

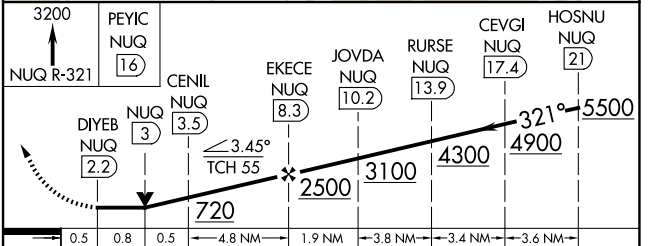
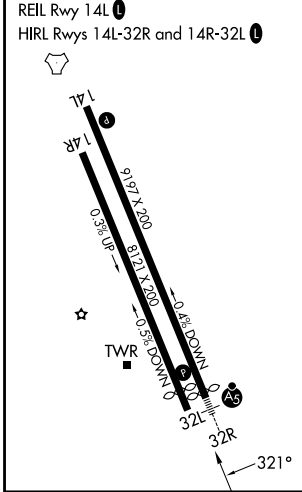
Rwy 32L helicopter visibility reduction below ¾ SM NA.

MISSED APPROACH: Climb to 3200 on NUQ TACAN R-321 to PEYIC/16 DME and hold.

ATIS 124.175 283.0	NORCAL APP CON 120.1 290.25	MOFFETT TOWER* 119.55 (CTAF) 0 259.65	GND CON 121.85 278.95
------------------------------	---------------------------------------	---	---------------------------------



ELEV 37	TDZE 36
---------	---------



CATEGORY	A	B	C	D	E
S-32L	560-1	524 (600-1)	560-1½		524 (600-1½)
CIRCLING	560-1 523 (600-1)	600-1 563 (600-1)	620-1½ 583 (600-1½)	780-2½ 743 (800-2½)	940-3 903 (1000-3)