

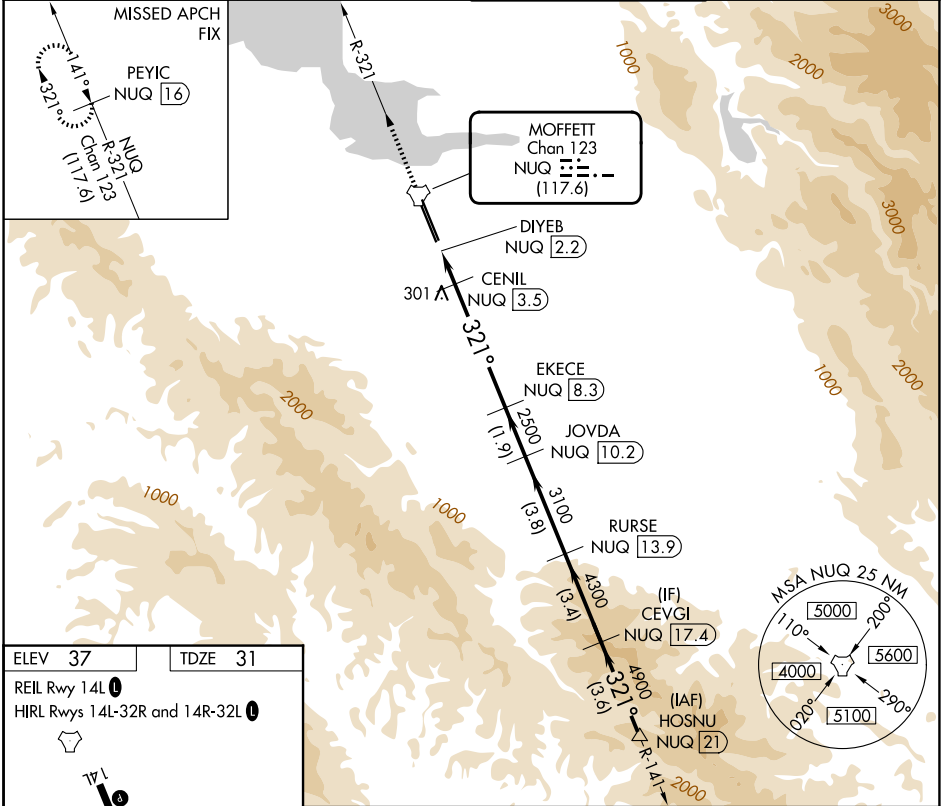
TACAN NUQ Chan <b>123</b> <b>(117.6)</b>	APP CRS <b>321°</b>	Rwy Ldg TDZE Apt Elev	<b>9006</b> <b>31</b> <b>37</b>
--	------------------------	-----------------------------	---------------------------------------

# TACAN RWY 32R

MOFFETT FEDERAL AIRFIELD (NUQ)

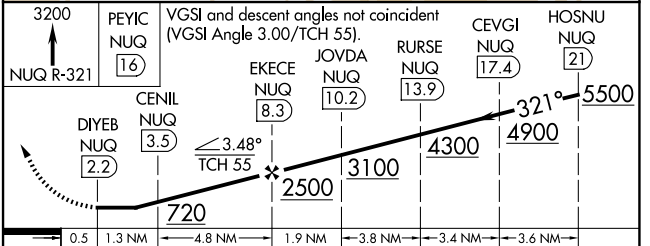
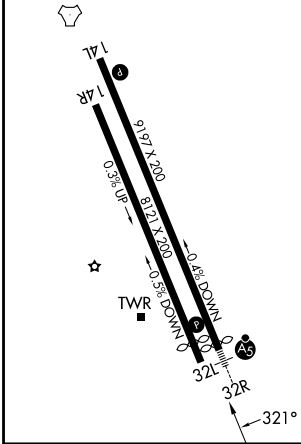
RADAR required for procedure entry.		MALSR 	MISSED APPROACH: Climb to 3200 on NUQ TACAN R-321 to PEYIC/16 DME and hold.
For inop ALS, increase Cat E visibility to 1 1/2 SM.			

ATIS <b>124.175 283.0</b>	NORCAL APP CON <b>120.1 290.25</b>	MOFFETT TOWER* <b>119.55 (CTAF) 0 259.65</b>	GND CON <b>121.85 278.95</b>
------------------------------	---------------------------------------	---	---------------------------------



ELEV 37	TDZE 31
---------	---------

REIL Rwy 14L  
HIRL Rws 14L-32R and 14R-32L



	0.5	1.3	4.8	1.9	3.8	3.4	3.6	
CATEGORY	A	B	C	D	E			
S-32R	560-1/2	529 (600-1/2)	560-1	529 (600-1)				
CIRCLING	560-1 523 (600-1)	600-1 563 (600-1)	620-1/2 583 (600-1/2)	780-2/2 743 (800-2/2)	940-3 903 (1000-3)			

SW-2, 14 MAY 2026 to 11 JUN 2026

SW-2, 14 MAY 2026 to 11 JUN 2026