

DADES TWO ARRIVAL (RNAV) Transition Routes

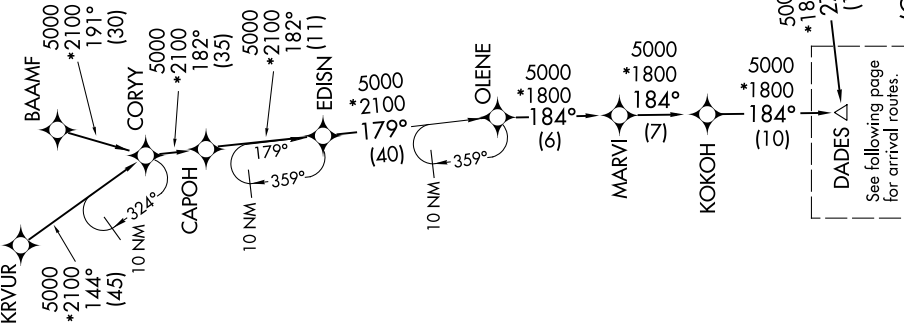
TAMPA, FLORIDA

TAMPA APP CON  
135.5 279.6  
KMCF ATIS  
133.825 270.1  
PIE ATIS  
134.5  
TPA D-ATIS  
126.45



RNAV 1- DME/DME/IRU or GPS.  
RADAR required.

NOTE: Jet and turboprop aircraft only.  
NOTE: KRVUR Transition, EDISN Transition, BEAUX Transition, NICCK Transition, ATC assigned only.



DADES Δ  
See following page for arrival routes.

BAAMF TRANSITION (BAAMF.DADES2)  
BEAUX TRANSITION (BEAUX.DADES2)  
EDISN TRANSITION (EDISN.DADES2)  
HIBAC TRANSITION (HIBAC.DADES2)  
KRVUR TRANSITION (KRVUR.DADES2)  
NICCK TRANSITION (NICCK.DADES2)

(CONTINUED ON FOLLOWING PAGE) NOTE: Chart not to scale.

DADES TWO ARRIVAL (RNAV) Transition Routes

TAMPA, FLORIDA