

REBLL FIVE DEPARTURE (RNAV)

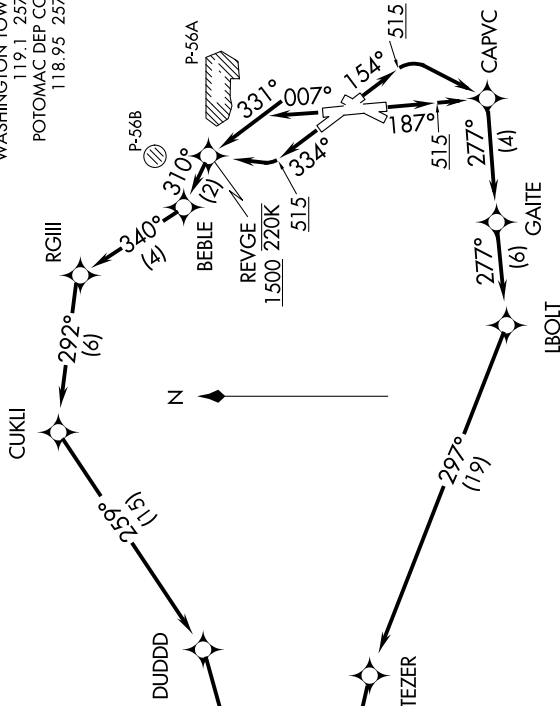
NE-3, 14 MAY 2026 to 11 JUN 2026

TOP ALTITUDE:
5000

TAKEOFF MINIMUMS:

- Rwy 1: Standard with minimum climb of 825' per NM to 600.
- Rwys 15, 19: Standard with minimum climb of 500' per NM to 515.
- Rwy 33: Standard with minimum climb of 540' per NM to 640.

12300
*5200
283° (15)
REBLL 5000



- D-ATIS 132.65
- CLNC DEL 128.25
- CPDLC 121.7 257.6
- GND CON 119.1 257.6
- WASHINGTON TOWER 118.95 257.2
- POTOMAC DEP CON 118.95 257.2

- NOTE: RNAV 1.
- NOTE: RADAR required.
- NOTE: DME/DME/IRU or GPS required.
- NOTE: Departing Rwy 1 requires expeditious intercept of outbound course to ensure avoidance of P-56 boundary.
- NOTE: Rwy 1 departures remain clear of P-56, climb heading 007°, turn left as soon as practical to intercept course 331° to REYGE.
- NOTE: Pilots shall comply with Ronald Reagan Washington Ntl Airport noise abatement and prohibited area (P-56) avoidance procedures as defined in the Chart Supplement Special Notices.
- NOTE: Turbo-jets only.

(NARRATIVE ON FOLLOWING PAGE)

NOTE: Chart not to scale.

NE-3, 14 MAY 2026 to 11 JUN 2026