

TRUPS FIVE ARRIVAL (RNAV) Transition Routes

WASHINGTON, DC

NE-3, 14 MAY 2026 to 11 JUN 2026

POTOMAC APP CON
118.675 323.175
DCA D-ATIS
132.65
ADW D-ATIS
133.675 251.05
DAA ATIS ★
128.175

NOTE: Jet aircraft only.

NOTE: Turboprops as assigned by ATC only.

NOTE: PROHIBITED AREA (P-56) 1.5 NM north of KDCA - AVOID - surface to FL180.

NOTE: Landing south at DCA use Runway 19 transition, landing north use Runway 1 transition.

Landing south at ADW use Runway 19R transition, landing north use Runway 1L transition.

Expect runway assignment from TRACON 10 miles prior to TRUPS.

RNAV 1 - DME/DME/IRU or GPS. RADAR required.

See following page for arrival routes.

TRUPS
11000 250K

OOJRR	250K
13000	250K

1131	5000	*3600
------	------	-------

1210(K)	5000	*3400	*3300	5000
---------	------	-------	-------	------

1131	5000	*3600
------	------	-------

17000	280K
14000	

17000	280K
-------	------

17000	280K
-------	------

17000	280K
-------	------

17000	280K
-------	------

17000	280K
-------	------

17000	280K
-------	------

17000	280K
-------	------

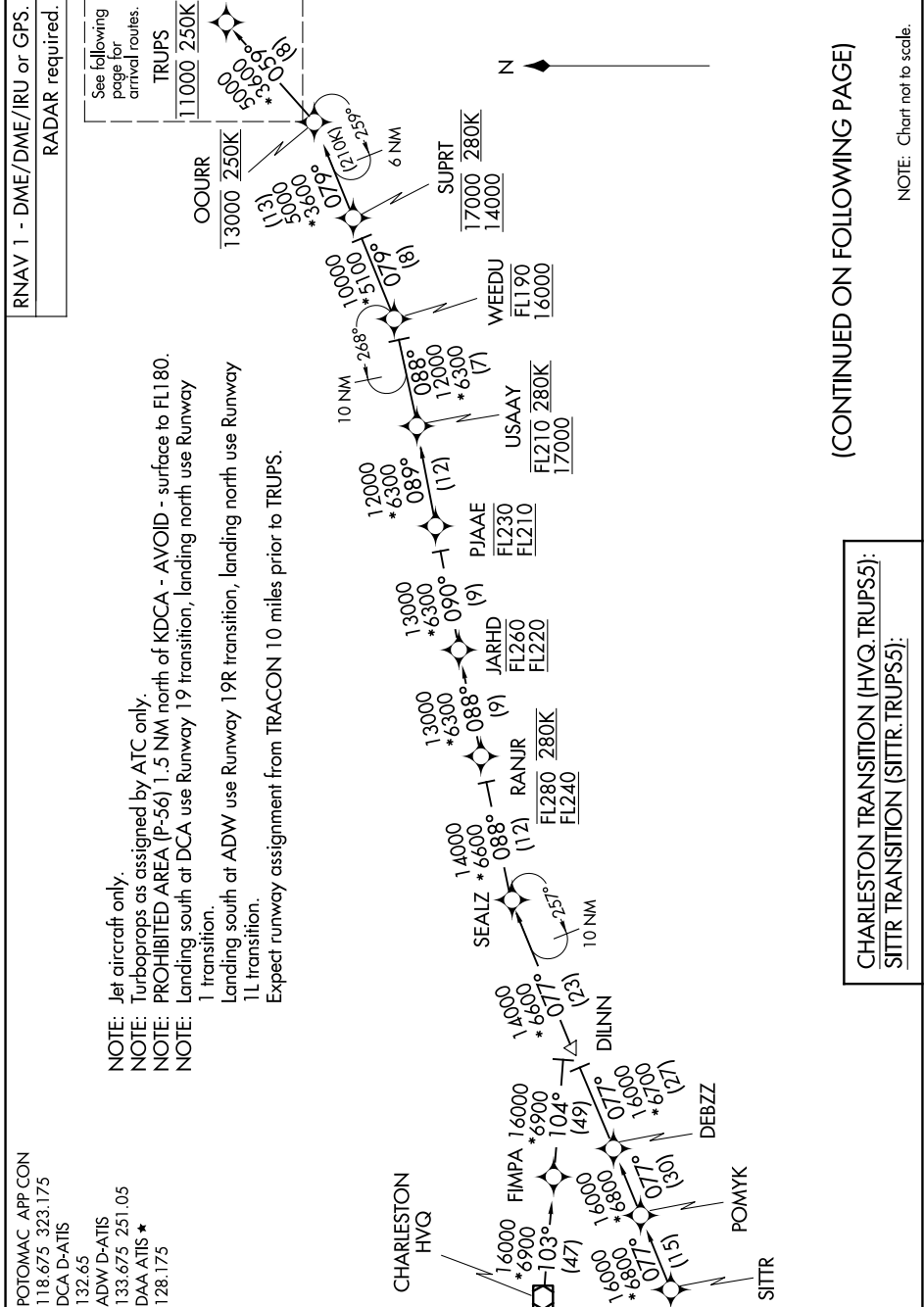
17000	280K
-------	------

17000	280K
-------	------

17000	280K
-------	------

TRUPS FIVE ARRIVAL (RNAV) Transition Routes

WASHINGTON, DC



(CONTINUED ON FOLLOWING PAGE)

CHARLESTON TRANSITION (HVQ.TRUPS5):
SITTR TRANSITION (SITTR.TRUPS5):

NOTE: Chart not to scale.

NE-3, 14 MAY 2026 to 11 JUN 2026