

TBIRD SEVEN DEPARTURE (RNAV) Departure Routes

PALM BEACH DEP CON
128.3 317.4
D-ATIS
123.75
CLNC DEL
121.6 284.6
CPDLC
GND CON
121.9 284.6
PALM BEACH TOWER
119.1 257.8

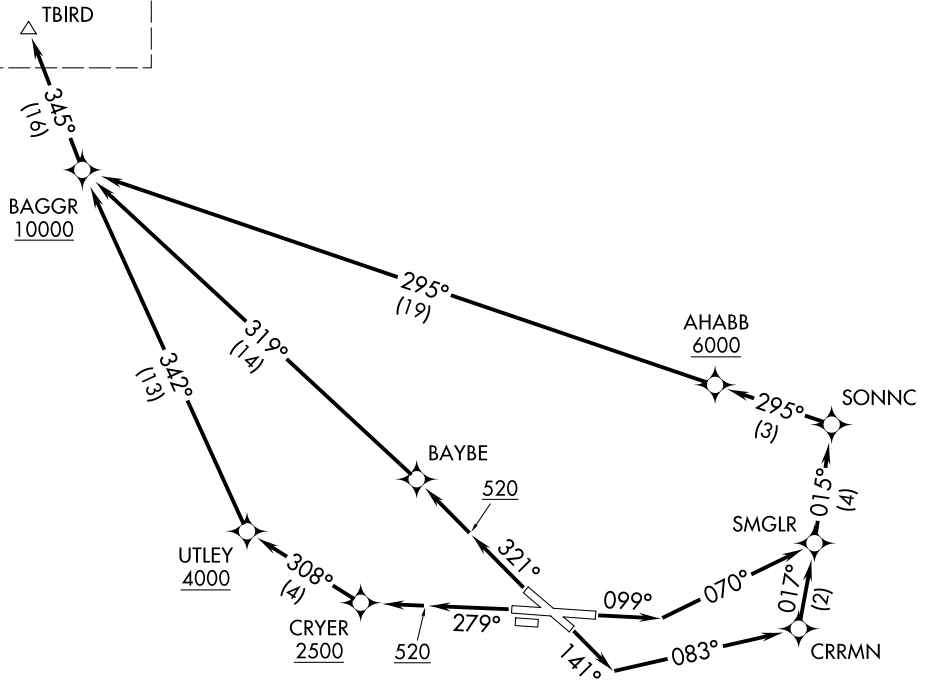
RNAV 1 - DME/DME/IRU or GPS.

RADAR required.

**TOP ALTITUDE:
11000**

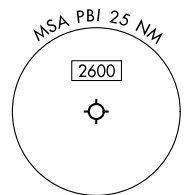
NOTE: Jet aircraft only.
NOTE: CHEFS Transition for use by MCO or DAB area arrivals.
NOTE: MATLK Transition for use by aircraft filed to Jacksonville area airports only, or as assigned by ATC.

See following page
for transition routes.



TAKEOFF MINIMUMS

Rwys 10L, 14, 28R, 32: Standard with minimum climb of 500'/NM to 520.



NOTE: Chart not to scale.

(CONTINUED ON FOLLOWING PAGE)

SE-3, 14 MAY 2026 to 11 JUN 2026

SE-3, 14 MAY 2026 to 11 JUN 2026