

TTYLR FOUR ARRIVAL

WEST PALM BEACH, FLORIDA

RADAR required. DME required.

PALM BEACH APP CON
 125.2 317.4
 BCT D-ATIS
 121.125
 PBI D-ATIS
 123.75
 SUA ATIS
 134.475

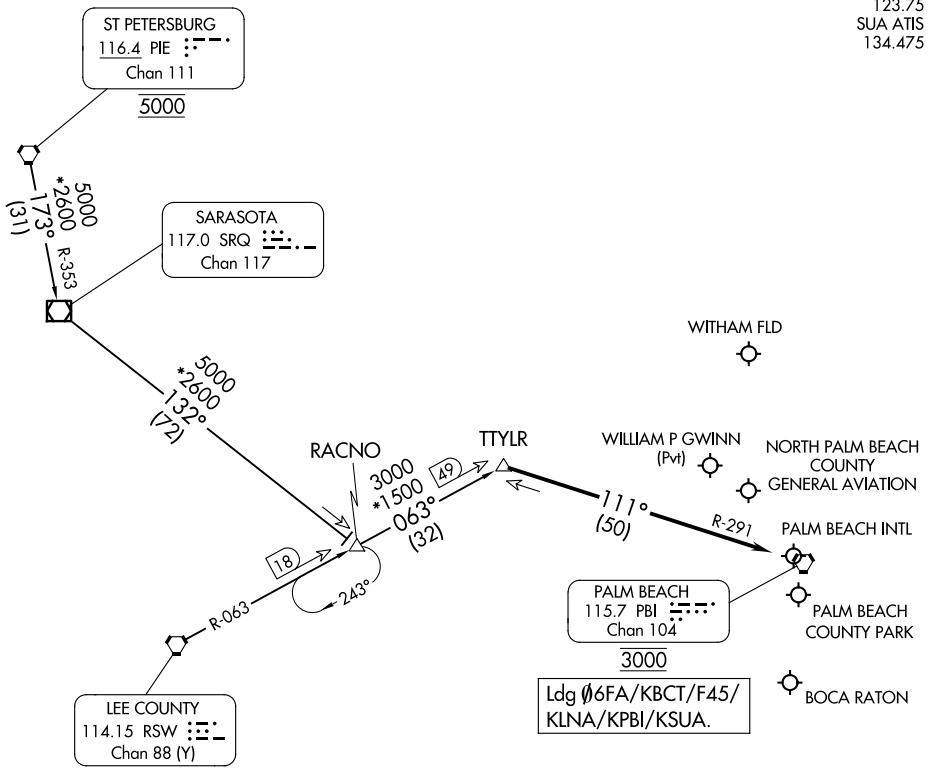
ST PETERSBURG
 116.4 PIE
 Chan 111
 5000

SARASOTA
 117.0 SRQ
 Chan 117

LEE COUNTY
 114.15 RSW
 Chan 88 (Y)

PALM BEACH
 115.7 PBI
 Chan 104
 3000

Ldg 6FA/KBCT/F45/
 KLNA/KPBI/KSUA.



SE-3, 14 MAY 2026 to 11 JUN 2026

SE-3, 14 MAY 2026 to 11 JUN 2026

NOTE: Chart not to scale.

ARRIVAL ROUTE DESCRIPTION

RACNO TRANSITION (RACNO.TTYLR4): From over RACNO on RSW R-063 to TTYLR, thence. . . .

ST PETERSBURG TRANSITION (PIE.TTYLR4): From over PIE VORTAC on PIE R-173 and SRQ R-353 to SRQ VOR/DME, then on SRQ R-132 to RACNO, then on RSW R-063 to TTYLR, thence. . . .

LANDING ALL AIRPORTS: From TTYLR on PALM BEACH (PBI) R-291 to cross PBI VORTAC at 3000. Expect RADAR vectors.

TTYLR FOUR ARRIVAL

WEST PALM BEACH, FLORIDA