

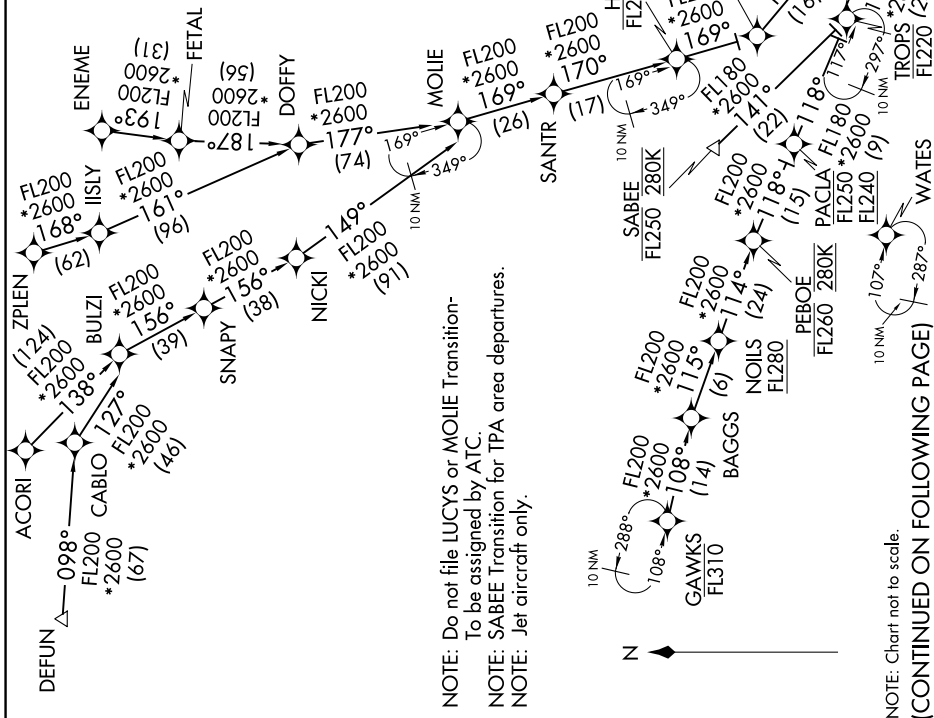
VUUDU ONE ARRIVAL (RNAV) Transition Routes

WEST PALM BEACH, FLORIDA

SE-3, 14 MAY 2026 to 11 JUN 2026

RNAV 1 - DME/DME/IRU or GPS. GAWKS Transition: GPS.	PAUM BEACH APP CON 127.35 317.4 BCT D-ATIS 121.125 PBI D-ATIS 123.75 SUA ATIS 134.475
RADAR required.	

ACORI TRANSITION (ACORI.VUUDU1)  
 DEFUN TRANSITION (DEFUN.VUUDU1)  
 ENEME TRANSITION (ENEME.VUUDU1)  
 GAWKS TRANSITION (GAWKS.VUUDU1)  
 LUCYS TRANSITION (LUCYS.VUUDU1)  
 MOJIE TRANSITION (MOJIE.VUUDU1)  
 SABEE TRANSITION (SABEE.VUUDU1)  
 SWAGS TRANSITION (SWAGS.VUUDU1)  
 ZPLEN TRANSITION (ZPLEN.VUUDU1)



NOTE: Do not file LUCYS or MOJIE Transition-  
 To be assigned by ATC.  
 NOTE: SABEE Transition for TPA area departures.  
 NOTE: Jet aircraft only.

NOTE: Chart not to scale.

(CONTINUED ON FOLLOWING PAGE)

SE-3, 14 MAY 2026 to 11 JUN 2026

VUUDU ONE ARRIVAL (RNAV) Transition Routes

WEST PALM BEACH, FLORIDA