

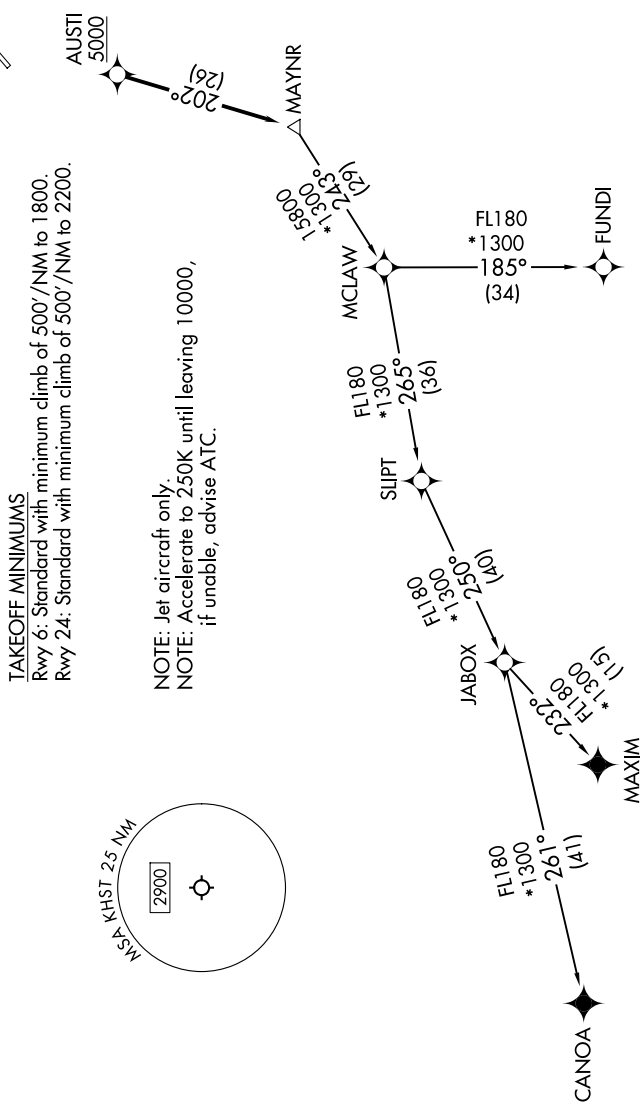
MAYNR THREE DEPARTURE (RNAV)

SE-3, 14 MAY 2026 to 11 JUN 2026

**TOP ALTITUDE:
ASSIGNED BY ATC**

RNAV 1 - DME/DME/IRU or GPS.
 From SLIPT to MAXIM: RNAV 1 - GPS.
 From SLIPT to CANOA: RNAV 1 - GPS.
 RADAR required for non-GPS equipped aircraft.
 RADAR required.

MIAMI DEP CON
 125.5 354.1
 ATIS *
 132.275 269.9
 CLNC DEL
 121.75 275.8
 GND CON
 121.75 275.8
 HOMESTEAD TOWER
 133.45 279.55



TAKEOFF MINIMUMS

Rwy 6: Standard with minimum climb of 500'/NM to 1800.
 Rwy 24: Standard with minimum climb of 500'/NM to 2200.

NOTE: Jet aircraft only.
 NOTE: Accelerate to 250K until leaving 10000,
 if unable, advise ATC.

(CONTINUED ON FOLLOWING PAGE)

NOTE: Chart not to scale.

SE-3, 14 MAY 2026 to 11 JUN 2026