

(TAQLE.TAQLE3) 26022

AL-516 (FAA)

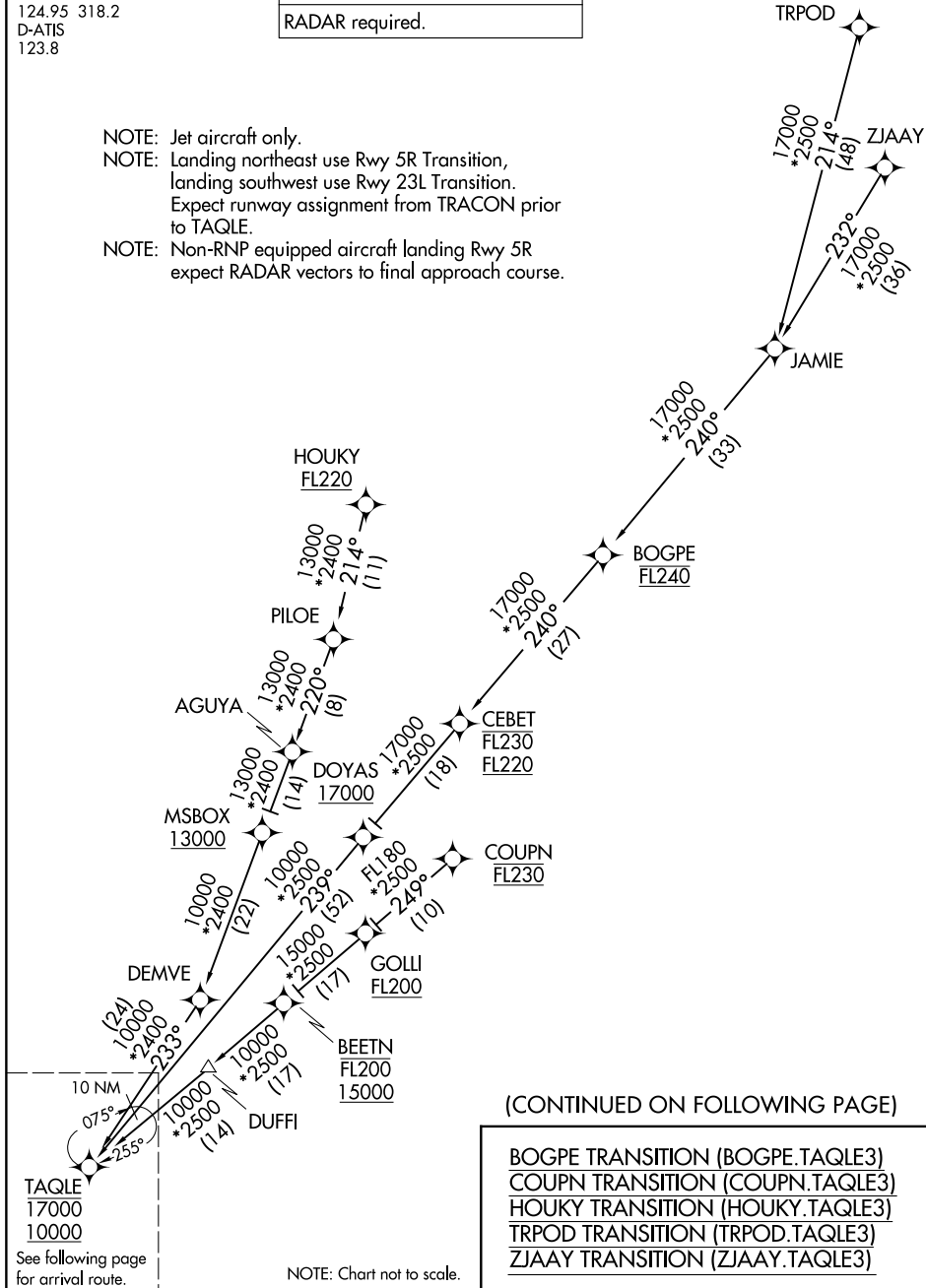
RALEIGH-DURHAM INTL (RDU)
RALEIGH/DURHAM, NORTH CAROLINA

TAQLE THREE ARRIVAL (RNAV) Transition Routes

RALEIGH APP CON
124.95 318.2
D-ATIS
123.8

RNAV 1 - DME/DME/IRU or GPS.
RADAR required.

- NOTE: Jet aircraft only.
 NOTE: Landing northeast use Rwy 5R Transition,
 landing southwest use Rwy 23L Transition.
 Expect runway assignment from TRACON prior
 to TAQLE.
 NOTE: Non-RNP equipped aircraft landing Rwy 5R
 expect RADAR vectors to final approach course.



SE-2, 14 MAY 2026 to 11 JUN 2026

SE-2, 14 MAY 2026 to 11 JUN 2026

TAQLE THREE ARRIVAL (RNAV) Transition Routes
(TAQLE.TAQLE3) 22JAN26

RALEIGH/DURHAM, NORTH CAROLINA
RALEIGH-DURHAM INTL (RDU)