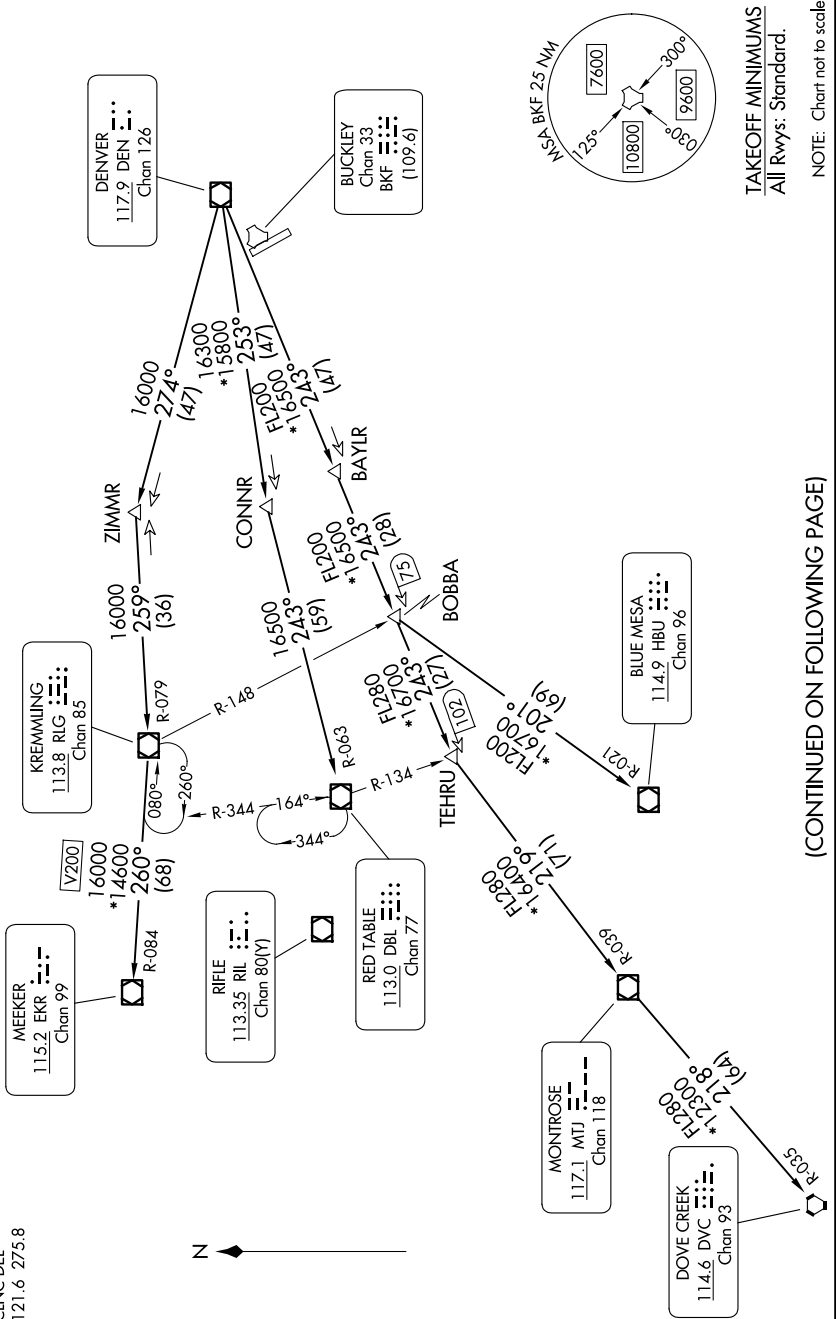


TOP ALTITUDE:
ASSIGNED BY ATC

RADAR required.

SW-1, 14 MAY 2026 to 11 JUN 2026

DENVER DEP CON
128.45 251.075
ATIS
119.675 259.3
CLNC DEL
121.6 275.8



TAKEOFF MINIMUMS
All Rvys: Standard.

NOTE: Chart not to scale.

(CONTINUED ON FOLLOWING PAGE)

SW-1, 14 MAY 2026 to 11 JUN 2026