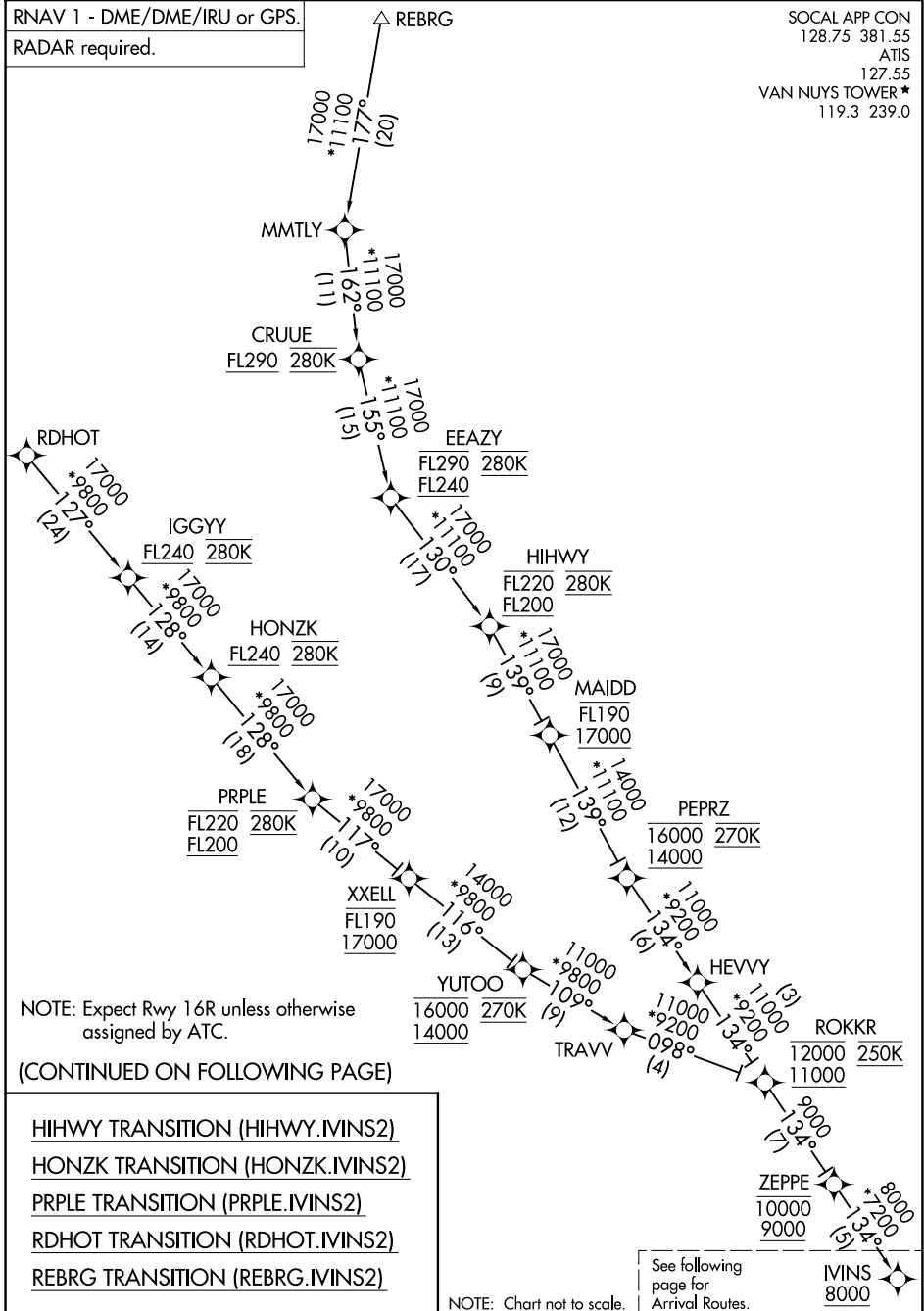


# IVINS TWO ARRIVAL (RNAV) Transition Routes

RNAV 1 - DME/DME/IRU or GPS.  
RADAR required.

SOCAL APP CON  
128.75 381.55  
ATIS  
127.55  
VAN NUYS TOWER \*  
119.3 239.0



NOTE: Expect Rwy 16R unless otherwise assigned by ATC.

(CONTINUED ON FOLLOWING PAGE)

- HIHWY TRANSITION (HIHWY.IVINS2)
- HONZK TRANSITION (HONZK.IVINS2)
- PRPLE TRANSITION (PRPLE.IVINS2)
- RDHOT TRANSITION (RDHOT.IVINS2)
- REBRG TRANSITION (REBRG.IVINS2)

NOTE: Chart not to scale.

See following page for Arrival Routes.

SW-3, 14 MAY 2026 to 11 JUN 2026

SW-3, 14 MAY 2026 to 11 JUN 2026

# IVINS TWO ARRIVAL (RNAV) Transition Routes